



SPC Benchmark 1™

Executive Summary



MS7000G2-Mach

SPC-1 IOPS™	11,000,576	SPC-1 Price Performance	\$385.64/SPC-1 KIOPS™
SPC-1 IOPS Response Time	0.337 ms	SPC-1 Total System Price	\$4,242,215.40
SPC-1 Overall Response Time	0.264 ms	SPC-1 Overall Discount	49.75%
		Currency / Target Country	USD / China
		Availability Date	Currently Available

Extensions

☆ SPC-1 Data Reduction	NA
☆ SPC-1 Encryption	NA
☆ SPC-1 NDU	NA
☆ SPC-1 Synchronous Replication	NA
☆ SPC-1 Snapshot	NA

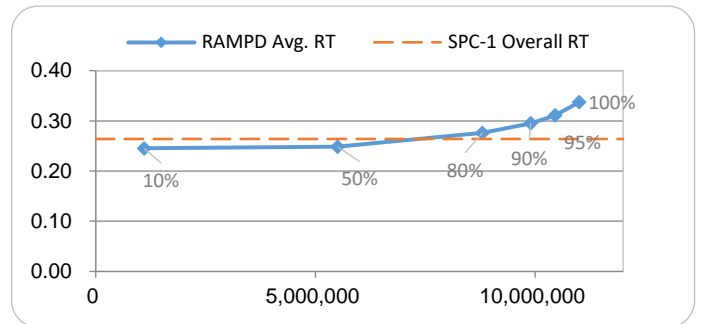
Storage Metrics

SPC-1 Data Protection Level	Protected 2
SPC-1 Physical Storage Capacity	460,800 GB
SPC-1 ASU Capacity	209,379 GB
SPC-1 ASU Price	\$20.27/GB

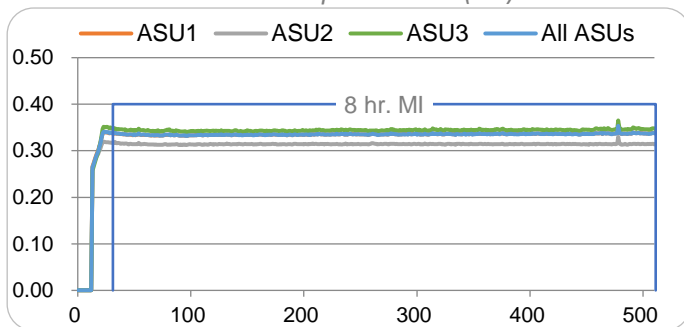
Priced Storage Configuration Summary

- 78 QLogic QLE2692 2-port FC HBAs
- 16 MS7000G2-Mach Active-Active Controllers
- 3,072 GB Total Cache (192 GB per controller)
- 256 16 Gb FC Ports (192 ports used)
- 288 1,600 GB SSDs
- 4 Brocade 6520 96-port Switches
- 2 10 Gb Ethernet 16-port Switches
- 1 Management Server
- 1 24-port 1 Gb Ethernet Switch
- 53 Total RUs

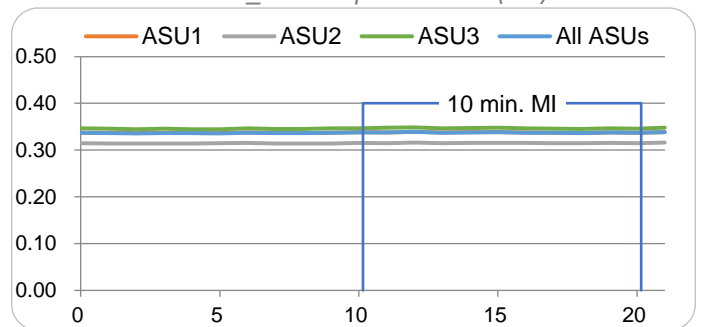
RAMPD Average Response Time (ms) vs. IOPS



SUSTAIN Response Time (ms)



RAMPD_100 Response Time (ms)



SPC Benchmark 1™ Specification Revision v3.9.1
 SPC Benchmark 1™ Workload Generator Revision v3.0.2

Submitted for Review October 27, 2020
 Submission Details www.storageperformance.org/r/A32020