



# SPC Benchmark 1™

## Executive Summary



# Inspur AS5300G5

SPC-1 IOPS™	<b>2,710,243</b>	SPC-1 Price Performance	<b>\$226.99/SPC-1 KIOPS™</b>
SPC-1 IOPS Response Time	<b>0.547 ms</b>	SPC-1 Total System Price	<b>\$615,192.25</b>
SPC-1 Overall Response Time	0.251 ms	SPC-1 Overall Discount	73.46%
		Currency / Target Country	USD / China
		Availability Date	August 31, 2020

### Extensions

☆ SPC-1 Data Reduction	NA
☆ SPC-1 Encryption	NA
☆ SPC-1 NDU	NA
☆ SPC-1 Synchronous Replication	NA
☆ SPC-1 Snapshot	NA

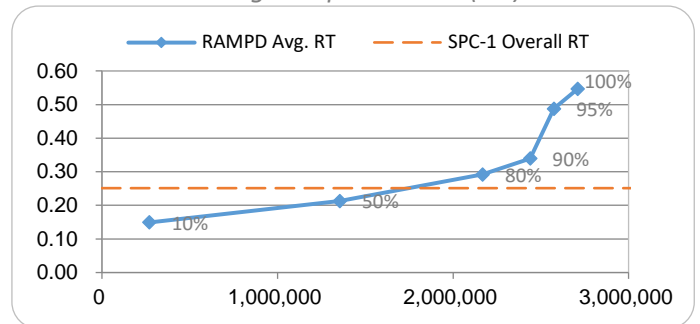
### Storage Metrics

SPC-1 Data Protection Level	Protected 2
SPC-1 Physical Storage Capacity	192,000 GB
SPC-1 ASU Capacity	68,719 GB
SPC-1 ASU Price	\$8.96/GB

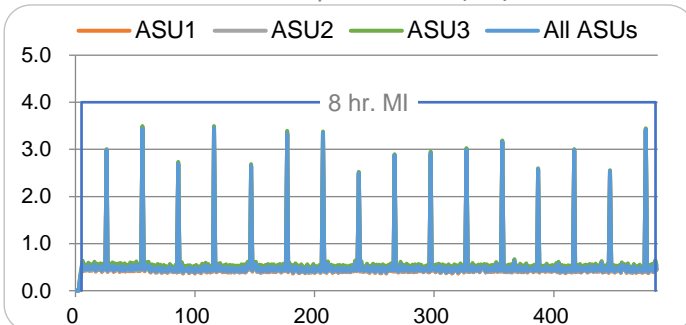
### Priced Storage Configuration Summary

- 16 Emulex LPe16002 2-port FC HBAs
- 4 Inspur AS5300G5
- 8 Controllers (2 per Enclosure)
- 1,024 GB Total Cache
- 64 16Gb FC Ports (48 ports used)
- 200 960 GB SSDs
- 2 FS6700 16 Gb FC Switches
- 18 Total RUs

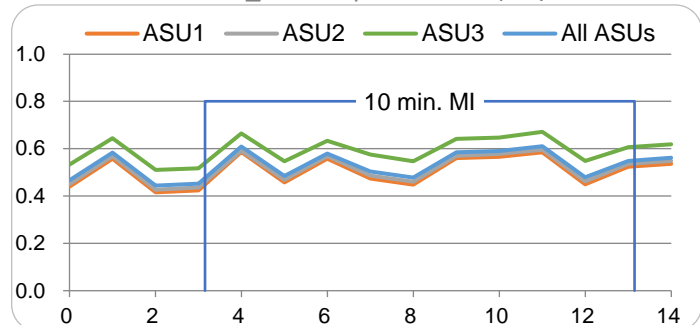
RAMPD Average Response Time (ms) vs. IOPS



SUSTAIN Response Time (ms)



RAMPD\_100 Response Time (ms)



SPC Benchmark 1™ Specification Revision v3.9.1  
 SPC Benchmark 1™ Workload Generator Revision v3.0.2-1-g823a

Submitted for Review September 3, 2020  
 Submission Details [www.storageperformance.org/r/A32017](http://www.storageperformance.org/r/A32017)