



**SPC BENCHMARK 1™  
FULL DISCLOSURE REPORT**

**SUN MICROSYSTEMS, INC.  
SUN STOREEDGE™ 3510**

**SPC-1 V1.8**

**Submitted for Review: February 1, 2005**

**Submission Identifier: A00038**

**Accepted: April 2, 2005**

**Revised: February 7, 2006**



**First Edition – February 2005**

THE INFORMATION CONTAINED IN THIS DOCUMENT IS DISTRIBUTED ON AN AS IS BASIS WITHOUT ANY WARRANTY EITHER EXPRESS OR IMPLIED. The use of this information or the implementation of any of these techniques is the customer's responsibility and depends on the customer's ability to evaluate and integrate them into the customer's operational environment. While each item has been reviewed by Sun Microsystems, Inc. for accuracy in a specific situation, there is no guarantee that the same or similar results will be obtained elsewhere. Customers attempting to adapt these techniques to their own environment do so at their own risk.

This publication was produced in the United States. Sun Microsystems, Inc. may not offer the products, services, or features discussed in this document in other countries, and the information is subject to change with notice. Consult your local Sun Microsystems, Inc. representative for information on products and services available in your area.

© Copyright Sun Microsystems, Inc. 2005. All rights reserved.

Permission is hereby granted to reproduce this document in whole or in part, provided the copyright notice as printed above is set forth in full text on the title page of each item reproduced.

**Trademarks**

SPC Benchmark 1, SPC-1 IOPS, and SPC-1 LRT are trademarks of the Storage Performance Council. Sun, Sun Microsystems, the Sun logo, Sun StorEdge, and Solaris are trademarks or registered trademarks of Sun Microsystems, Inc. in the United States and other countries. UNIX is a registered trademark of The Open Group in the United States and other countries. All other brands, trademarks, and product names are the property of their respective owners.

**Notes**

The following terms, used in this document, are defined as:

- Kilobyte (KB) is equal to 1,000 ( $10^3$ ) bytes.
- Megabyte (MB) is equal to 1,000,000 ( $10^6$ ) bytes.
- Gigabyte (GB) is equal to 1,000,000,000 ( $10^9$ ) bytes.
- Terabyte (TB) is equal to 1,000,000,000,000 ( $10^{12}$ ) bytes.

## Table of Contents

<b>Audit Certification.....</b>	<b>vi</b>
<b>Letter of Good Faith .....</b>	<b>viii</b>
<b>Executive Summary.....</b>	<b>9</b>
<b>Test Sponsor and Contact Information.....</b>	<b>9</b>
<b>Revision Information and Key Dates .....</b>	<b>9</b>
<b>Summary of Results .....</b>	<b>10</b>
<b>Storage Capacities and Relationships .....</b>	<b>10</b>
<b>Response Time - Throughput Curve .....</b>	<b>11</b>
<b>Response Time - Throughput Data.....</b>	<b>11</b>
<b>Tested Storage Configuration Pricing (<i>Priced Storage Configuration</i>) .....</b>	<b>12</b>
<b>Differences between the Tested Storage Configuration (TSC) and Priced Storage Configuration.....</b>	<b>12</b>
<b>Benchmark Configuration/Tested Storage Configuration Diagram.....</b>	<b>13</b>
<b>Configuration Information .....</b>	<b>14</b>
<b>Benchmark Configuration (BC)/Tested Storage Configuration (TSC) Diagram.</b>	<b>14</b>
<b>Storage Network Configuration .....</b>	<b>14</b>
<b>Host System Configuration.....</b>	<b>14</b>
<b>Customer Tunable Parameters and Options .....</b>	<b>15</b>
<b>Tested Storage Configuration (TSC) Description .....</b>	<b>15</b>
<b>SPC-1 Workload Generator Storage Configuration .....</b>	<b>15</b>
<b>Data Repository.....</b>	<b>16</b>
<b>Definitions.....</b>	<b>16</b>
<b>Storage Capacities and Relationships .....</b>	<b>17</b>
SPC-1 Storage Capacities .....	17
SPC-1 Storage Hierarchy Ratios .....	17
SPC-1 Storage Capacities and Relationships Illustration.....	18
<b>Logical Volume Capacity and ASU Mapping .....</b>	<b>18</b>
<b>SPC-1 Benchmark Execution Results.....</b>	<b>19</b>
<b>Definitions.....</b>	<b>19</b>
<b>Primary Metrics Test - Sustainability Test Phase .....</b>	<b>20</b>
SPC-1 Workload Generator Input Parameters .....	20
Sustainability Test Results File .....	20
Sustainability - Data Rate Distribution Data ( <i>MB/second</i> ).....	21
Sustainability - Data Rate Distribution Graph .....	22
Sustainability - I/O Request Throughput Distribution Data.....	23
Sustainability - I/O Request Throughput Distribution Graph .....	24

Sustainability – Measured Intensity Multiplier and Coefficient of Variation.....	24
<b>Primary Metrics Test – IOPS Test Phase.....</b>	<b>25</b>
SPC-1 Workload Generator Input Parameters .....	25
IOPS Test Results File.....	25
IOPS Test Run – I/O Request Throughput Distribution Data .....	26
IOPS Test Run – I/O Request Throughput Distribution Graph.....	26
IOPS Test Run – Response Time Frequency Distribution Data .....	27
IOPS Test Run –Response Time Frequency Distribution Graph.....	27
IOPS Test Run – Average Response Time (ms) Distribution Data .....	28
IOPS Test Run – Average Response Time (ms) Distribution Graph .....	28
IOPS Test Run – I/O Request Information.....	29
IOPS Test Run – Measured Intensity Multiplier and Coefficient of Variation.....	29
<b>Primary Metrics Test – Response Time Ramp Test Phase .....</b>	<b>30</b>
SPC-1 Workload Generator Input Parameters .....	30
Response Time Ramp Test Results File.....	30
Response Time Ramp Distribution (IOPS) Data.....	31
Response Time Ramp Distribution (IOPS) Graph .....	31
Response Time Ramp Distribution (IOPS) Graph .....	32
SPC-1 LRT™ Average Response Time (ms) Distribution Data.....	33
SPC-1 LRT™ Average Response Time (ms) Distribution Graph .....	33
SPC-1 LRT™ (10%) – Measured Intensity Multiplier and Coefficient of Variation .....	34
<b>Repeatability Test .....</b>	<b>35</b>
SPC-1 Workload Generator Input Parameters .....	35
Repeatability Test Results File .....	36
Repeatability 1 LRT – I/O Request Throughput Distribution Data.....	37
Repeatability 1 LRT – I/O Request Throughput Distribution Graph .....	37
Repeatability 1 LRT –Average Response Time (ms) Distribution Data .....	38
Repeatability 1 LRT –Average Response Time (ms) Distribution Graph.....	38
Repeatability 1 IOPS – I/O Request Throughput Distribution Data .....	39
Repeatability 1 IOPS – I/O Request Throughput Distribution Graph.....	39
Repeatability 1 IOPS –Average Response Time (ms) Distribution Data.....	40
Repeatability 1 IOPS –Average Response Time (ms) Distribution Graph .....	40
Repeatability 2 LRT – I/O Request Throughput Distribution Data.....	41
Repeatability 2 LRT – I/O Request Throughput Distribution Graph .....	41
Repeatability 2 LRT –Average Response Time (ms) Distribution Data .....	42
Repeatability 2 LRT –Average Response Time (ms) Distribution Graph.....	42
Repeatability 2 IOPS – I/O Request Throughput Distribution Data .....	43
Repeatability 2 IOPS – I/O Request Throughput Distribution Graph.....	43
Repeatability 2 IOPS –Average Response Time (ms) Distribution Data.....	44

Repeatability 2 IOPS –Average Response Time (ms) Distribution Graph .....	44
Repeatability 1 (LRT) Measured Intensity Multiplier and Coefficient of Variation .....	45
Repeatability 1 (IOPS) Measured Intensity Multiplier and Coefficient of Variation .....	45
Repeatability 2 (LRT) Measured Intensity Multiplier and Coefficient of Variation .....	45
Repeatability 2 (IOPS) Measured Intensity Multiplier and Coefficient of Variation .....	45
<b>Data Persistence Test.....</b>	<b>46</b>
SPC-1 Workload Generator Input Parameters .....	46
Data Persistence Test Results File .....	46
Data Persistence Test Results.....	47
<b>Priced Storage Configuration Availability Date.....</b>	<b>48</b>
<b>Pricing Information.....</b>	<b>48</b>
<b>Anomalies or Irregularities .....</b>	<b>48</b>
<b>Appendix A: Customer Tunable Parameters and Options.....</b>	<b>49</b>
<b>Appendix B: Tested Storage Configuration (TSC) Creation .....</b>	<b>52</b>
<b>Appendix C: SPC-1 Workload Generator Storage Commands and Parameters .....</b>	<b>54</b>
<b>Appendix D: SPC-1 Workload Generator Input Parameters.....</b>	<b>55</b>

## AUDIT CERTIFICATION



Leah Schoeb  
Sun Microsystems, Inc.  
5300 Riata Park Court AUS08  
Austin, TX 78721

February 1, 2005

The SPC Benchmark 1™ results listed below for the Sun StorEdge™ 3510 were produced in compliance with the SPC Benchmark 1™ V1.8 Onsite Audit requirements.

SPC Benchmark 1™ V1.8 Results	
Tested Storage Configuration (TSC) Name: Sun StorEdge™ 3510	
Metric	Reported Result
SPC-1 IOPS™	11,647.63
SPC-1 Price-Performance	\$5.94/SPC-1 IOPS™
Total ASU Capacity	604,000 GB
Data Protection Level	Mirroring
Total TSC Price (including three-year maintenance)	\$69,228.00

The following SPC Benchmark 1™ Onsite Audit requirements were reviewed and found compliant with V1.8 of the SPC Benchmark 1™ specification:

- A Letter of Good Faith, signed by a senior executive.
- The following Data Repository storage items were verified by physical inspection and information supplied by Sun Microsystems, Inc.:
  - ✓ Physical Storage Capacity and requirements.
  - ✓ Configured Storage Capacity and requirements.
  - ✓ Addressable Storage Capacity and requirements.
  - ✓ Capacity of each Logical Volume and requirements.
  - ✓ Capacity of each Application Storage Unit (ASU) and requirements.
- An appropriate diagram of the Benchmark Configuration (BC)/Tested Storage Configuration (TSC).
- Physical verification of the components to match the above diagram.

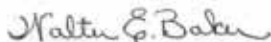
Storage Performance Council  
643 Bair Island Road, Suite 103  
Redwood City, CA 94062  
[AuditService@storageperformance.org](mailto:AuditService@storageperformance.org)  
650.556.9384

- Listings and commands to configure the Benchmark Configuration/Tested Storage Configuration, including customer tunable parameters.
- Commands and parameters used to configure the SPC-1 Workload Generator.
- The following Host System requirements were verified by physical inspection and information supplied by Sun Microsystems, Inc.:
  - ✓ The type of Host System including the number of processors and main memory.
  - ✓ The presence and version number of the Workload Generator on the Host System.
  - ✓ The TSC boundary within the Host System.
- The execution of each Test, Test Phase, and Test Run was observed and found compliant with all of the requirements and constraints of Clauses 4 and 5 of the SPC-1 Benchmark Specification.
- The Test Results Files and resultant Summary Results Files received for each of following were authentic, accurate, and compliant with all of the requirements and constraints of Clauses 4 and 5 of the SPC-1 Benchmark Specification:
  - ✓ Data Persistence Test
  - ✓ Sustainability Test Phase
  - ✓ IOPS Test Phase
  - ✓ Response Time Ramp Test Phase
  - ✓ Repeatability Test
- The difference between the Tested Storage Configuration (TSC) used for the benchmark and Priced Storage Configuration is noted below.
- The final version of the pricing spreadsheet met all of the requirements and constraints of Clause 8 of the SPC-1 Benchmark Specification.
- The Full Disclosure Report (FDR) met all of the requirements in Clause 9 of the SPC-1 Benchmark Specification.

**Audit Notes:**

The Tested Storage Configuration was configured with four (4) dual-port HBAs and used a single port in each HBA. The Priced Storage Configuration substituted four (4) single port HBAs for the four (4) dual-port HBAs. If the single port HBAs had been used in the Tested Storage Configuration, they would not have contributed to any measurable performance difference.

Respectfully,



Walter E. Baker  
SPC Auditor

Storage Performance Council  
643 Bair Island Road, Suite 103  
Redwood City, CA 94062  
[AuditService@storageperformance.org](mailto:AuditService@storageperformance.org)  
650.558.9384

**LETTER OF GOOD FAITH**

Date: 1/25/05

From: Kathleen Holmgren

To: Walter Baker

Subject: SPC-1 Letter of Good Faith for the StorEdge™ 3510

Sun Microsystems Inc. is the SPC-1 Test Sponsor for the above listed product. To the best of our knowledge and belief, the required SPC-1 benchmark results and materials we have submitted for that product are complete, accurate, and in full compliance with V1.8 of the SPC-1 benchmark specification.

In addition, we have reported any items in the Benchmark Configuration and execution of the benchmark that affected the reported results even if the items are not explicitly required to be disclosed by the SPC-1 benchmark specification.

Signed:

A handwritten signature in black ink, appearing to read 'Kathleen Holmgren', written over a horizontal line.

Kathleen Holmgren  
Senior Vice President, Product Line Management Network Storage



## **EXECUTIVE SUMMARY**

### **Test Sponsor and Contact Information**

<b>Test Sponsor and Contact Information</b>	
<b>Test Sponsor Primary Contact</b>	Sun Microsystems, Inc. – <a href="http://www.sun.com">http://www.sun.com</a> Leah Schoeb – <a href="mailto:leah.schoeb@sun.com">leah.schoeb@sun.com</a> 5300 Riata Park Court AUS08 Austin, TX 78721 Phone: (512) 401-1227 FAX: (512) 266-2523
<b>Test Sponsor Alternate Contact</b>	Sun Microsystems, Inc. – <a href="http://www.sun.com">http://www.sun.com</a> Tom Sheffield – <a href="mailto:tom.sheffield@sun.com">tom.sheffield@sun.com</a> 500 Eldorado Blvd. UBRM05 Broomfield, CO 80021 Phone: (303) 272-8804 FAX: (303) 272-7491
<b>Auditor</b>	Storage Performance Council – <a href="http://www.StoragePerformance.org">http://www.StoragePerformance.org</a> Walter E. Baker – <a href="mailto:AuditService@StoragePerformance.org">AuditService@StoragePerformance.org</a> 643 Bair Island Road, Suite 103 Redwood City, CA 94063 Phone: (650) 556-9384 FAX: (650) 556-9385

### **Revision Information and Key Dates**

<b>Revision Information and Key Dates</b>	
<b>SPC-1 Specification revision number</b>	V1.8
<b>SPC-1 Workload Generator revision number</b>	V2.00.04a
<b>Date Results were first used publicly</b>	February 1, 2005
<b>Date FDR was submitted to the SPC</b>	February 1, 2005
<b>Date revised FDR was submitted to the SPC</b> Revised pricing	February 7, 2006
<b>Date the TSC is/was available for shipment to customers</b>	March 22, 2004
<b>Date the TSC completed audit certification</b>	February 1, 2005

### Summary of Results

SPC-1 Results	
Tested Storage Configuration (TSC) Name: Sun StorEdge™ 3510	
Metric	Reported Result
SPC-1 IOPS™	11,647.63
SPC-1 Price-Performance	\$3.72/SPC-1 IOPS™
Total ASU Capacity	604.000 GB
Data Protection Level	Mirroring
Total TSC Price (including three-year maintenance)	\$43,327.00

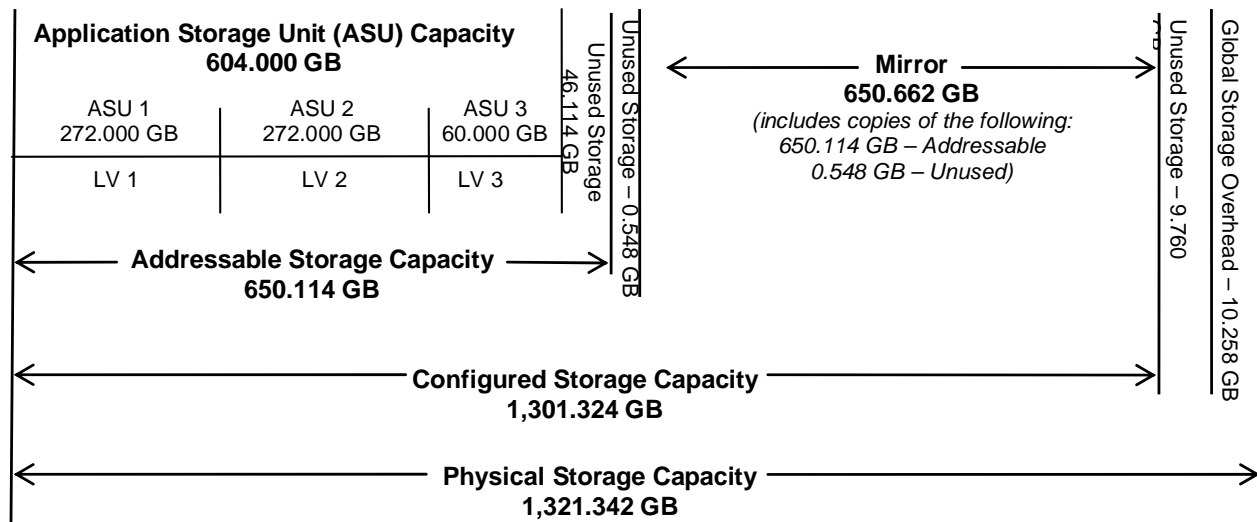
**SPC-1 IOPS™** represents the maximum I/O Request Throughput at the 100% load point.

**Total ASU (Application Storage Unit) Capacity** represents the total storage capacity read and written in the course of executing the SPC-1 benchmark.

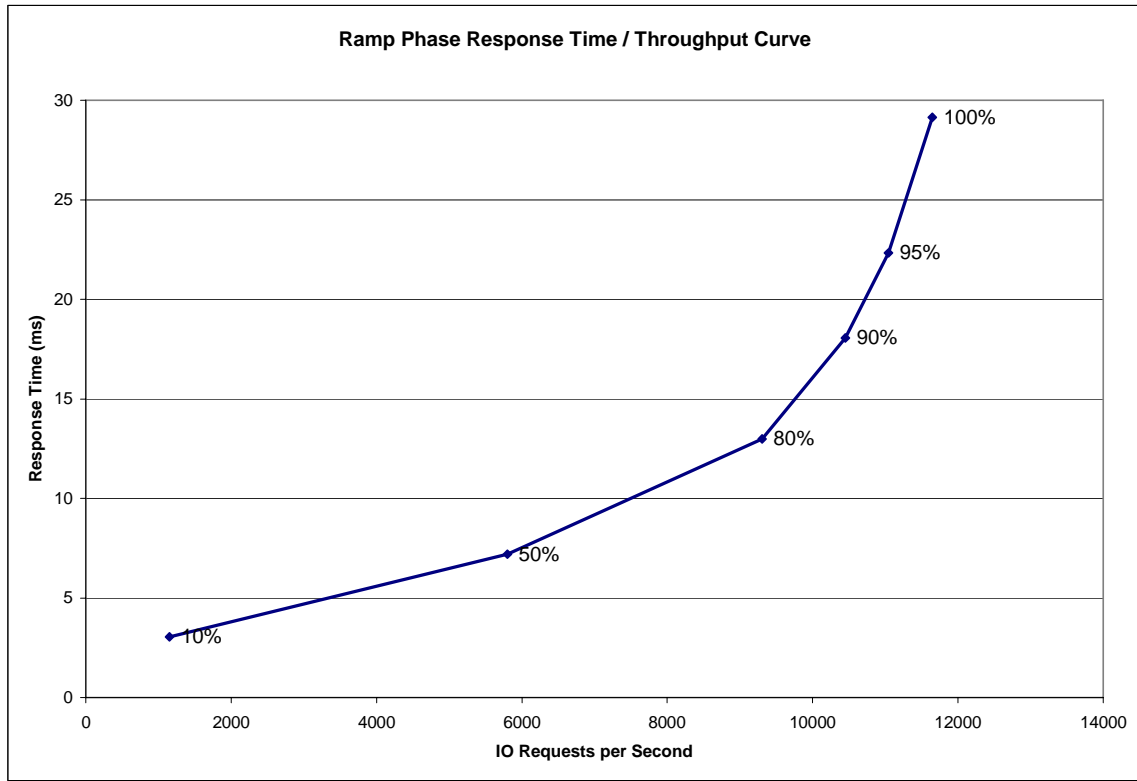
A **Data Protection Level** of Mirroring configures two or more identical copies of user data.

### Storage Capacities and Relationships

The following diagram documents the various storage capacities, used in this benchmark, and their relationships.



### Response Time – Throughput Curve



The Response Time-Throughput Curve illustrates the Average Response Time (milliseconds) and I/O Request Throughput at 100%, 95%, 90%, 80%, 50%, and 10% of the workload level used to generate the SPC-1 IOPS™ metric.

The Average Response Time measured at any of the above load points cannot exceed 30 milliseconds or the benchmark measurement is invalid.

### Response Time – Throughput Data

	10% Load	50% Load	80% Load	90% Load	95% Load	100% Load
<b>I/O Request Throughput</b>	1,151.09	5,799.73	9,307.48	10,449.45	11,044.82	11,647.63
<b>Average Response Time (ms):</b>						
All ASUs	3.04	7.19	12.98	18.06	22.34	29.15
ASU-1	3.41	7.73	14.15	19.54	23.80	30.29
ASU-2	2.86	7.02	14.92	23.90	31.81	44.11
ASU-3	2.32	6.14	9.65	12.35	15.08	20.18
Reads	4.24	8.79	18.19	26.94	33.61	43.08
Writes	2.26	6.15	9.59	12.27	15.00	20.08

### Tested Storage Configuration Pricing (*Priced Storage Configuration*)

Part Number	Description	Quantity	US List	Extended	Disc.	Ave. Price
XTA3510R01A2S436	Sun StorEdge 3510 Fibre Channel Array	1	\$26,995	\$26,995	38%	\$16,737
	2 FC-AL HW RAID Controllers					
	1GB Std cache per Controller					
	2 AC power supplies					
	Sun StorEdge Configuration Service					
	Rack Ready					
XTA3510R01A0S436	12 36GB/15K Drives					
	Sun StorEdge 3510 Fibre Channel Array JBOD	2	\$12,995	\$25,990	38%	\$16,114
	Rack Ready					
	2 AC power supplies					
	12 36GB/15K Drives					
W9D-6120-2-2403G	3-Year Maintenance Agreement	1	\$13,464	\$13,464	50%	\$6,732
X6767A	2Gb PCI Single FC Host Based Adapter	4	\$1,560	\$6,240	40%	\$3,744
<b>Total</b>			<b>\$55,014</b>	<b>\$72,689</b>		<b>\$43,327</b>

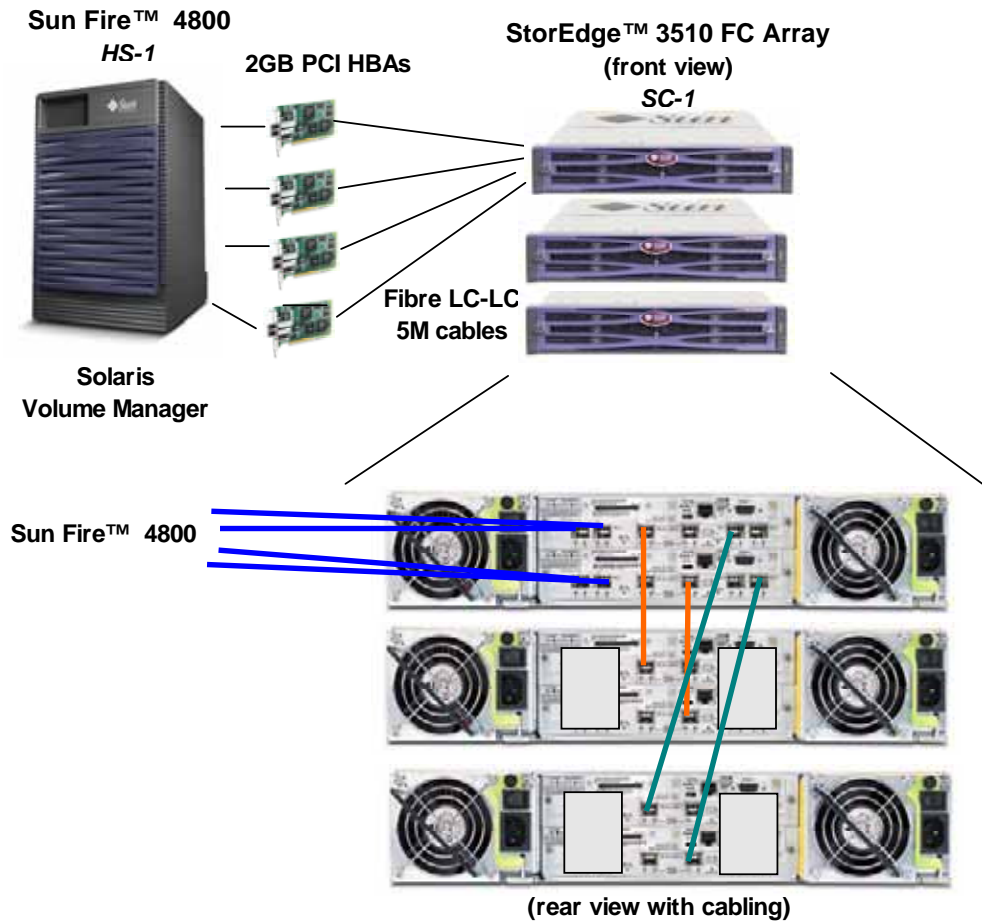
Three year “Gold Service” System Maintenance is included, which provides the following:

- 7 days per week, 24 hours per day coverage.
- Acknowledgement of new and existing problems within four hours.
- Onsite presence of a qualified maintenance engineer or provision of a customer replaceable part within four hours of the above acknowledgement for any hardware failure that results in an inoperative Priced Storage Configuration component. In either of the two cases, the remedy will result in resumption of operation.

### Differences between the Tested Storage Configuration (TSC) and Priced Storage Configuration

The Tested Storage Configuration was configured with four (4) dual-port HBAs and used a single port in each HBA. The Priced Storage Configuration substituted four (4) single port HBAs for the four (4) dual-port HBAs. If the single port HBAs had been used in the Tested Storage Configuration, they would not have contributed to any measurable performance difference.

### Benchmark Configuration/Tested Storage Configuration Diagram



Host Systems:	Tested Storage Configuration (TSC):
<b>UID=HS-1</b>	4 – 2 GB FC Single PCI HBAs
Sun Fire™ 4800:	<b>UID=SC-1:</b>
12 – UltraSPARC™ 1.2 GHz CPUs 8 MB EEC external cache per CPU	Sun StorEdge™ 3510 FC Array:
8 GB – main memory	2 – controllers
Solaris 9 update 7	1 GB cache per controller
Solaris Volume Manager	8 – Fibre Channel ports (4 ports per controller)
WG	2 – JBOD expansion units
	36 – 36 GB 15k rpm disk drives

## **CONFIGURATION INFORMATION**

### **Benchmark Configuration (BC)/Tested Storage Configuration (TSC) Diagram**

#### *Clause 9.2.4.4.1*

*A one page Benchmark Configuration (BC)/Tested Storage Configuration (TSC) diagram shall be included in the Executive Summary...*

The Benchmark Configuration (BC)/Tested Storage Configuration (TSC) is illustrated on page 13 (*Benchmark Configuration/Tested Storage Configuration Diagram*).

### **Storage Network Configuration**

#### *Clause 9.2.4.4.2*

*If a storage network is employed in the BC/TSC, the FDR shall contain a topology diagram... . This diagram should include, but is not limited to the following components:*

- 1. Storage Controller and Domain Controllers (see Clause 9.2.4.4.1)*
- 2. Host Systems (see Clause 9.2.4.4.1)*
- 3. Routers and Bridges*
- 4. Hubs and Switches*
- 5. HBAs to Host Systems and Front End Port to Storage Controllers*

*Additionally the diagram shall:*

- Illustrate the physical connection between components.*
- Describe the type of each physical connection.*
- Describe the network protocol used over each physical connection.*
- The maximum theoretical transfer rate of each class of interconnect used in the configuration.*
- Correlate with the BC Configuration Diagram in Clause 9.2.4.4.1.*

*The Test Sponsor shall additionally supply (referenced in an appendix) a wiring diagram of the physical connections and physical port assignments used in the storage network. The diagram should allow anyone to exactly replicate the physical configuration of the storage network.*

The Benchmark Configuration (BC)/Tested Storage Configuration (TSC) was configured with local storage and, as such, did not employ a storage network.

### **Host System Configuration**

#### *Clause 9.2.4.4.3*

*The FDR shall minimally contain, for each Host System running the Workload Generator, a listing of the following:*

- 1. Number and type of CPUs.*
- 2. Main memory capacity.*
- 3. Cache memory capacity.*
- 4. Number and type of disk controllers or Host Bus Adapters.*

The details of the Host System configuration may be found on page 13 (*Benchmark Configuration/Tested Storage Configuration Diagram*).

## Customer Tunable Parameters and Options

### Clause 9.2.4.5.1

All Benchmark Configuration (BC) components with customer tunable parameter and options that have been altered from their default values must be listed in the FDR. The FDR entry for each of those components must include both the name of the component and the altered value of the parameter or option.

“Appendix A: Customer Tunable Parameters and Options” on page 49 contains the customer tunable parameters and options that have been altered from their default values for this benchmark.

## Tested Storage Configuration (TSC) Description

### Clause 9.2.4.5.2

The FDR must include sufficient information to recreate the logical representation of the TSC. In addition to customer tunable parameters and options (Clause 4.2.4.5.3), that information must include, at a minimum, a diagram and/or description of the following:

- All physical components that comprise the TSC. Those components are also illustrated in the Benchmark Configuration (BC) diagram in Clause 9.2.4.4.1 and, if applicable, the Storage Network Configuration Diagram in Clause 9.2.4.4.2.
- The logical representation of the TSC, configured from the above components that will be presented to the Workload Generator.

In addition the FDR may include listings of scripts and/or commands used to configure the physical components that comprise the TSC.

“Appendix B: Tested Storage Configuration (TSC) Creation” on page 52 contains the detailed information that describes how to create and configure the logical TSC.

## SPC-1 Workload Generator Storage Configuration

### Clause 9.2.4.5.3

The FDR must include all SPC-1 Workload Generator storage configuration commands and parameters.

The SPC-1 Workload Generator storage configuration commands and parameters for this measurement appear in “Appendix C: SPC-1 Workload Generator Storage Commands and Parameters” on page 54.

## **DATA REPOSITORY**

### **Definitions**

**Total ASU Capacity:** The total storage capacity read and written in the course of executing the SPC-1 benchmark.

**Application Storage Unit (ASU):** The logical interface between the storage and SPC-1 Workload Generator. The three ASUs (Data, User, and Log) are typically implemented on one or more Logical Volume.

**Logical Volume:** The division of Addressable Storage Capacity into individually addressable logical units of storage used in the SPC-1 benchmark. Each Logical Volume is implemented as a single, contiguous address space.

**Addressable Storage Capacity:** The total storage (sum of Logical Volumes) that can be read and written by application programs such as the SPC-1 Workload Generator.

**Configured Storage Capacity:** This capacity includes the Addressable Storage Capacity and any other storage (parity disks, hot spares, etc.) necessary to implement the Addressable Storage Capacity.

**Physical Storage Capacity:** The formatted capacity of all storage devices physically present in the Tested Storage Configuration (TSC).

**Data Protection Overhead:** The storage capacity required to implement the ECC data protection.

**Required Storage:** The amount of Configured Storage Capacity required to implement the Addressable Storage Configuration, excluding the storage required for the three ASUs.

**Global Storage Overhead:** The amount of Physical Storage Capacity that is required for storage subsystem use and unavailable for use by application programs.

**Total Unused Storage:** The amount of storage capacity available for use by application programs but not included in the Total ASU Capacity.



## Storage Capacities and Relationships

Two tables and an illustration documenting the storage capacities and relationships of the SPC-1 Storage Hierarchy (Clause 2.1) shall be included in the FDR.

### SPC-1 Storage Capacities

SPC-1 Storage Capacities		
Storage Hierarchy Component	Units	Capacity
Total ASU Capacity	Gigabytes (GB)	604.000
Addressable Storage Capacity	Gigabytes (GB)	650.114
Configured Storage Capacity	Gigabytes (GB)	1,301.324
Physical Storage Capacity	Gigabytes (GB)	1,321.342
Data Protection (mirror)	Gigabytes (GB)	650.662
Required Storage	Gigabytes (GB)	0.000
Global Storage Overhead	Gigabytes (GB)	10.258
Total Unused Storage	Gigabytes (GB)	103.083

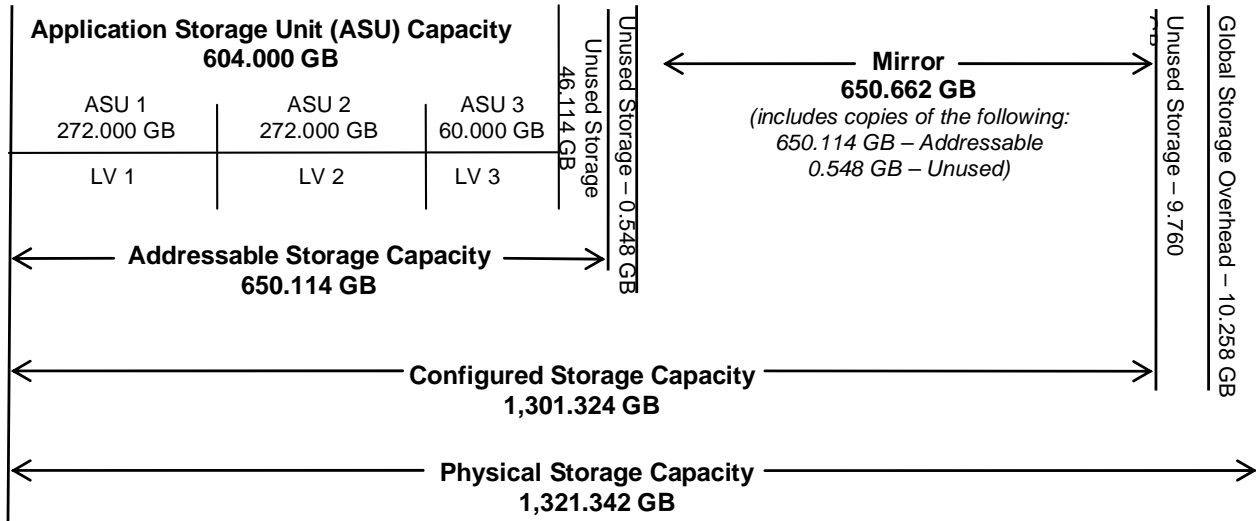
### SPC-1 Storage Hierarchy Ratios

	Addressable Storage Capacity	Configured Storage Capacity	Physical Storage Capacity
<b>Total ASU Capacity</b>	92.91%	46.41%	45.71%
<b>Required for Data Protection (Mirroring)</b>		50.00%	49.24%
<b>Addressable Storage Capacity</b>		49.96%	49.20%
<b>Required Storage</b>		0.00%	0.00%
<b>Configured Storage Capacity</b>			98.49%
<b>Global Storage Overhead</b>			0.78%
<b>Unused Storage:</b>			
<b>Addressable</b>	7.09%		
<b>Configured</b>		7.17%	
<b>Physical</b>			0.74%

The Physical Storage Capacity consisted of 1,321.342 GB distributed over 36 disk drives each with a formatted capacity of 36.704 GB. There was 9.76 GB (0.7 %) of Unused Storage within the Physical Storage Capacity. Global Storage Overhead consisted of 10.258 GB (0.78 %) of Physical Storage Capacity. There was 103.083 GB (7.17%) of Unused Storage within the Configured Storage Capacity. The Total ASU Capacity utilized 92.91% of the Addressable Storage Capacity resulting in 46.114 GB (7.09%) of Unused Storage within the Addressable Storage Capacity.

### SPC-1 Storage Capacities and Relationships Illustration

The various storage capacities configured in the benchmark result are illustrated below (not to scale).



### Logical Volume Capacity and ASU Mapping

*Clause 9.2.4.6.2*

A table illustrating the capacity of each ASU and the mapping of Logical Volumes to ASUs shall be provided in the FDR. Logical Volumes shall be sequenced in the table from top to bottom per its position in the contiguous address space of each ASU. The capacity of each Logical Volume shall be stated. ... In conjunction with this table, the Test Sponsor shall provide a complete description of the type of data protection (see Clause 2.4.5) used on each Logical Volume.

Logical Volume Capacity and Mapping		
ASU-1 (272.000 GB)	ASU-2 (272.000 GB)	ASU-3 (60.000 GB)
1 Logical Volume 292.552 GB per Logical Volume (272.000GB used per Logical Volume)	1 Logical Volume 292.760 GB per Logical Volume (272.000 GB used per Logical Volume)	1 Logical Volume 64.802 GB per Logical Volume (60.000 GB used per Logical Volume)

The Data Protection Level used for all Logical Volumes was Mirroring as described on page 10. See “ASU Configuration” in the [IOPS Test Results File](#) for more detailed configuration information.

## **SPC-1 BENCHMARK EXECUTION RESULTS**

### **Definitions**

**Average Response Time:** *The sum of the Response Times for all Measured I/O Requests divided by the total number of Measured I/O Requests.*

**I/O Request Throughput:** *The total number of Measured I/O requests in an SPC-1 Test Run divided by the duration of the Measurement Interval in seconds.*

**Measurement Interval:** *The finite and contiguous time period, after the Tested Storage Configuration (TSC) has reached Steady State, when data is collected by a Test Sponsor to generate an SPC-1 test result or support an SPC-1 test result.*

**Steady State:** *The consistent and sustainable throughput of the TSC. During this period the load presented to the TSC by the Workload Generator is constant. Comment: Steady Stated is achieved only after caches in the TSC have filled and as a result the I/O Request throughput of the TSC has stabilized.*

**Test:** *A collection of Test Phases or Test Runs sharing a common objective.*

**Test Phase:** *A collection of one or more SPC-1 Test Runs sharing a common objective and intended to be run in a specific sequence.*

**Test Run:** *The execution of SPC-1 for the purpose of producing or supporting an SPC-1 test result. SPC-1 Test Runs may have a finite and measured Ramp-Up period, Start-Up period, Shut-Down period, and Ramp-Down period as illustrated in the Figure 5-1 below. All SPC-1 Test Runs shall have a Steady State period and a Measurement Interval.*

The SPC-1 benchmark consists of the following Tests, Test Phases, and Test Runs:

- **Data Persistence Test**
  - Data Persistence Test Run 1
  - Data Persistence Test Run 2
- **Primary Metrics Test**
  - Sustainability Test Phase and Test Run
  - IOPS Test Phase and Test Run
  - Response Time Ramp Test Phase
    - 95% of IOPS Test Run
    - 90% of IOPS Test Run
    - 80% of IOPS Test Run
    - 50% of IOPS Test Run
    - 10% of IOPS Test Run (LRT)
- **Repeatability Test**
  - Repeatability Test Phase 1
    - 10% of IOPS Test Run (LRT)
    - IOPS Test Run
  - Repeatability Test Phase 2
    - 10% of IOPS Test Run (LRT)
    - IOPS Test Run

Each Test is an atomic unit that must be executed from start to finish before any other Test, Test Phase, or Test Run may be executed. The Tests may be executed in any sequence.

The results from each Test, Test Phase, and Test Run are listed below along with a more detailed explanation of each component.

## **Primary Metrics Test – Sustainability Test Phase**

### Clause 5.4.2.1

*The Sustainability Test Phase consists of one Test Run at the 100% load point with a Measurement Interval of three (3) hours. The intent is to demonstrate a sustained maximum I/O Request Throughput as well as insuring the Tested Storage Configuration (TSC) has reached steady state prior to measuring the maximum I/O Request Throughput (SPC-1™ IOPS).*

*The reported I/O Request Throughput of the Sustainability Test Run must be within 5% of the reported SPC-1™ IOPS primary metric. The Average Response Time measured in Sustainability Test Run cannot exceed thirty (30) milliseconds.*

### Clause 9.2.4.7.1

*For the Sustainability Test Phase the FDR shall contain:*

- 1. A Data Rate Distribution (data table and graph).*
- 2. I/O Request Throughput Distribution (data table and graph).*
- 3. The human readable Test Run Results File produced by the Workload Generator.*
- 4. A listing or screen image of all input parameters supplied to the Workload Generator.*
- 5. The Measured Intensity Multiplier for each I/O stream.*
- 6. The variability of the Measured Intensity Multiplier, as defined in Clause 5.3.13.3.*

## **SPC-1 Workload Generator Input Parameters**

The SPC-1 Workload Generator input parameters for the Sustainability, IOPS, and Response Time Ramp Test Runs are documented in “Appendix D: SPC-1 Workload Generator Input Parameters” on Page 55.

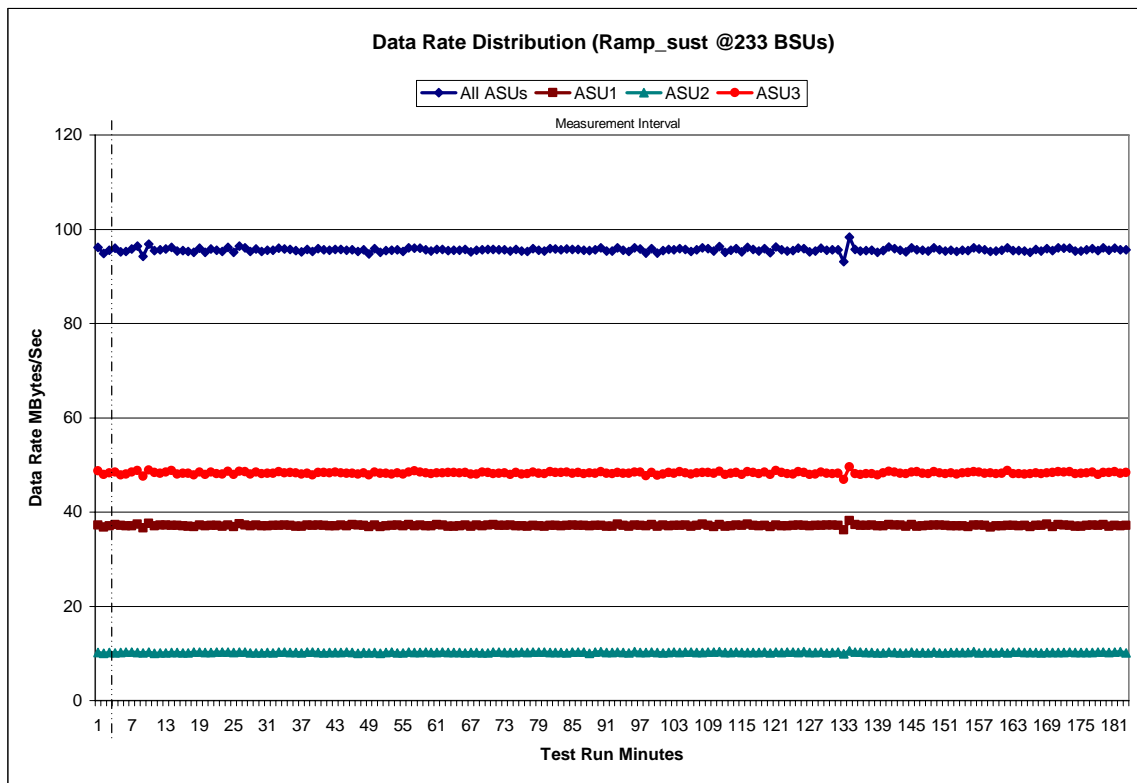
## **Sustainability Test Results File**

A link to the test results file generated from the Sustainability Test Run is listed below.

[Sustainability Test Results File](#)

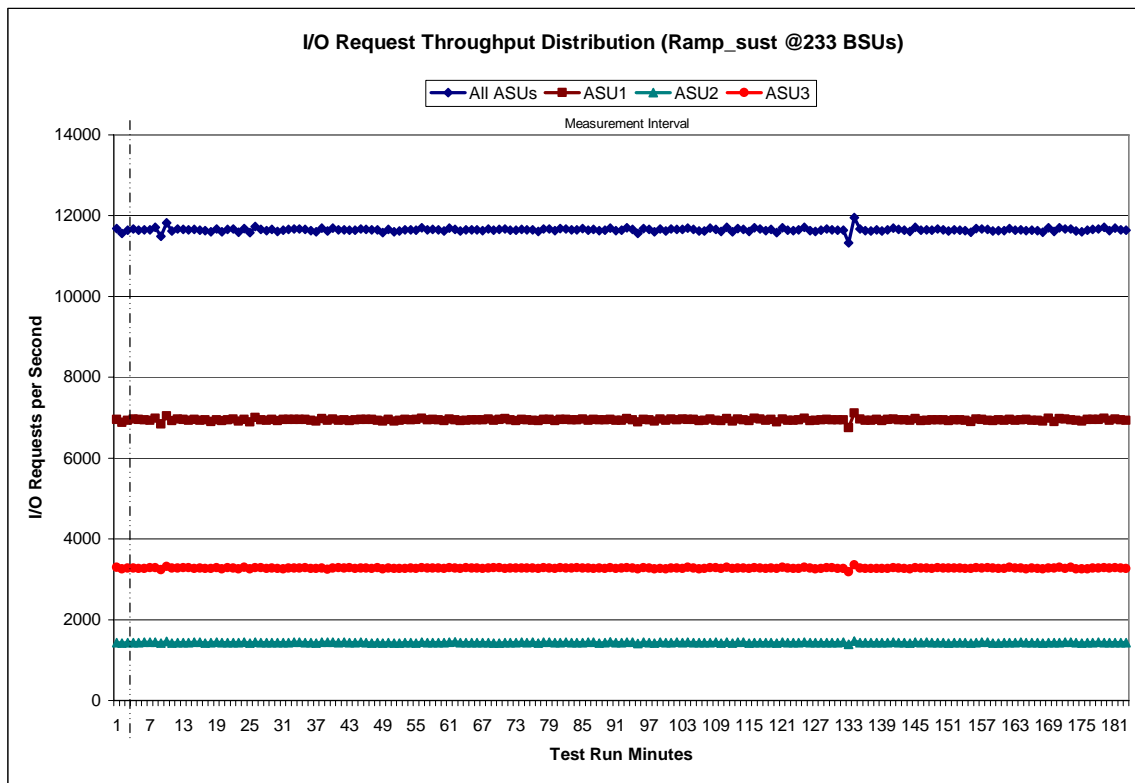


### Sustainability – Data Rate Distribution Graph





### Sustainability – I/O Request Throughput Distribution Graph



### Sustainability – Measured Intensity Multiplier and Coefficient of Variation

	ASU1-1	ASU1-2	ASU1-3	ASU1-4	ASU2-1	ASU2-2	ASU2-3	ASU3-1
IM	0.0350	0.2810	0.0700	0.2100	0.0180	0.0700	0.0350	0.2810
MIM	0.0350	0.2810	0.0700	0.02100	0.0180	0.0700	0.0350	0.2810
COV	0.006	0.002	0.004	0.002	0.008	0.004	0.007	0.002

**IM – Intensity Multiplier:** The ratio of I/Os for each I/O stream relative to the total I/Os for all I/O streams (ASU1-1 – ASU3-1) as required by the benchmark specification.

**MIM – Measured Intensity Multiplier:** The Measured Intensity Multiplier represents the ratio of measured I/Os for each I/O stream relative to the total I/Os measured for all I/O streams (ASU1-1 – ASU3-1). This value may differ from the corresponding Expected Intensity Multiplier by no more than 5%.

**COV – Coefficient of Variation:** This measure of variation for the Measured Intensity Multiplier cannot exceed 0.2.



## **Primary Metrics Test – IOPS Test Phase**

### Clause 5.4.2.2

*The IOPS Test Phase consists of one Test Run at the 100% load point with a Measurement Interval of ten (10) minutes. The IOPS Test Phase immediately follows the Sustainability Test Phase without any interruption or manual intervention.*

*The IOPS Test Run generates the SPC-1 IOPS™ primary metric, which is computed as the I/O Request Throughput for the Measurement Interval of the IOPS Test Run.*

*The Average Response Time is computed for the IOPS Test Run and cannot exceed 30 milliseconds. If the Average Response Time exceeds the 30 millisecond constraint, the measurement is invalid.*

### Clause 9.2.4.7.2

*For the IOPS Test Phase the FDR shall contain:*

- 1. I/O Request Throughput Distribution (data and graph).*
- 2. A Response Time Frequency Distribution.*
- 3. An Average Response Time Distribution.*
- 4. The human readable Test Run Results File produced by the Workload Generator.*
- 5. A listing or screen image of all input parameters supplied to the Workload Generator.*
- 6. The total number of I/O Requests completed in the Measurement Interval as well as the number of I/O Requests with a Response Time less than or equal to 30 milliseconds and the number of I/O Requests with a Response Time greater than 30 milliseconds.*

## **SPC-1 Workload Generator Input Parameters**

The SPC-1 Workload Generator input parameters for the Sustainability, IOPS, and Response Time Ramp Test Runs are documented in “Appendix D: SPC-1 Workload Generator Input Parameters” on Page 55.

## **IOPS Test Results File**

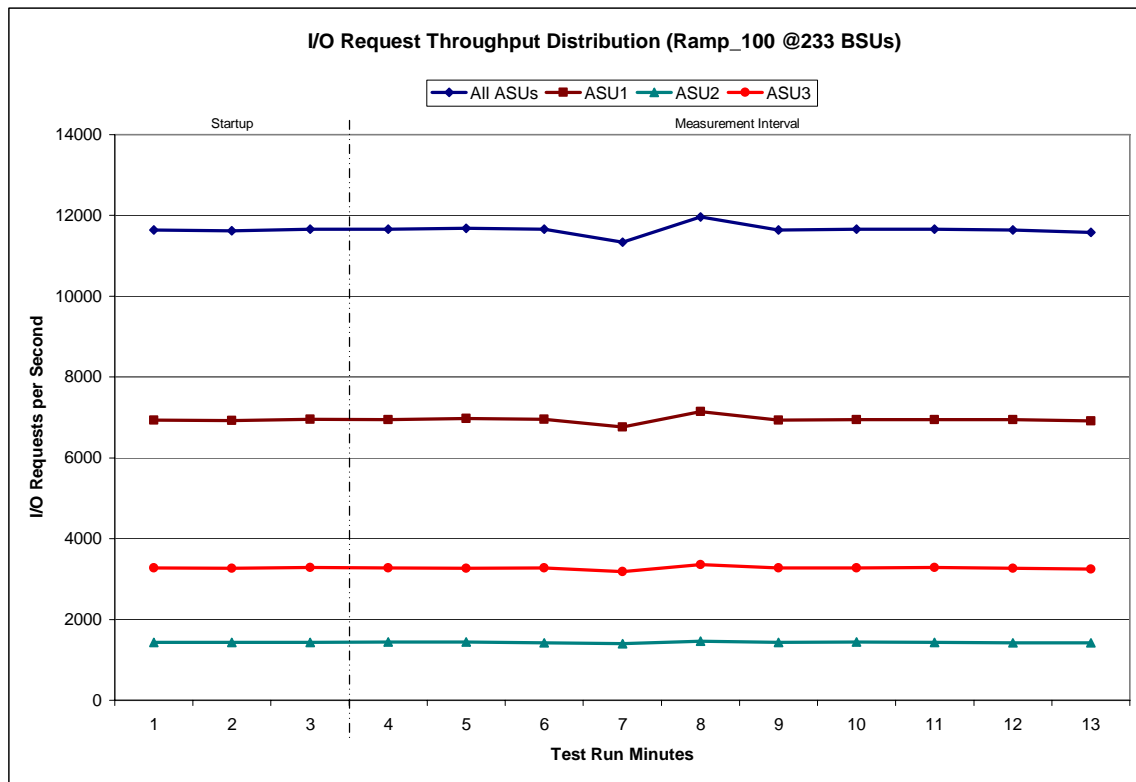
A link to the test results file generated from the IOPS Test Run is listed below.

[IOPS Test Results File](#)

**IOPS Test Run – I/O Request Throughput Distribution Data**

233 BSUs	Start	Stop	Interval	Duration
<i>Start-Up/Ramp-Up</i>	3:45:52	3:48:53	0-2	0:03:01
<i>Measurement Interval</i>	3:48:53	3:58:53	3-12	0:10:00
60 second intervals	All ASUs	ASU1	ASU2	ASU3
0	11,645.22	6,935.85	1,429.32	3,280.05
1	11,619.12	6,922.55	1,429.82	3,266.75
2	11,662.08	6,953.87	1,426.27	3,281.95
3	11,657.62	6,946.80	1,436.37	3,274.45
4	11,682.50	6,974.87	1,439.97	3,267.67
5	11,657.07	6,957.72	1,420.22	3,279.13
6	11,340.85	6,758.62	1,397.53	3,184.70
7	11,961.00	7,142.13	1,462.73	3,356.13
8	11,639.53	6,937.10	1,429.93	3,272.50
9	11,657.82	6,942.00	1,439.27	3,276.55
10	11,660.65	6,945.98	1,433.37	3,281.30
11	11,637.15	6,945.98	1,424.27	3,266.90
12	11,582.07	6,912.92	1,423.00	3,246.15
<b>Average</b>	<b>11,647.63</b>	<b>6,946.41</b>	<b>1,430.67</b>	<b>3,270.55</b>

**IOPS Test Run – I/O Request Throughput Distribution Graph**



**IOPS Test Run – Response Time Frequency Distribution Data**

Response Time (ms)	0-0.25	>0.25-0.5	>0.5-0.75	>0.75-1.0	>1.0-1.25	>1.25-1.5	>1.5-1.75	>1.75-2.0
Read	1	45,559	77,892	69,370	59,088	49,264	42,255	35,590
Write	0	-	-	-	-	-	8	121
All ASUs	1	45,559	77,892	69,370	59,088	49,264	42,263	35,711
ASU1	1	33,569	57,091	51,043	43,554	36,296	31,151	26,311
ASU2	0	11,990	20,801	18,327	15,534	12,968	11,109	9,358
ASU3	0	-	-	-	-	-	3	42

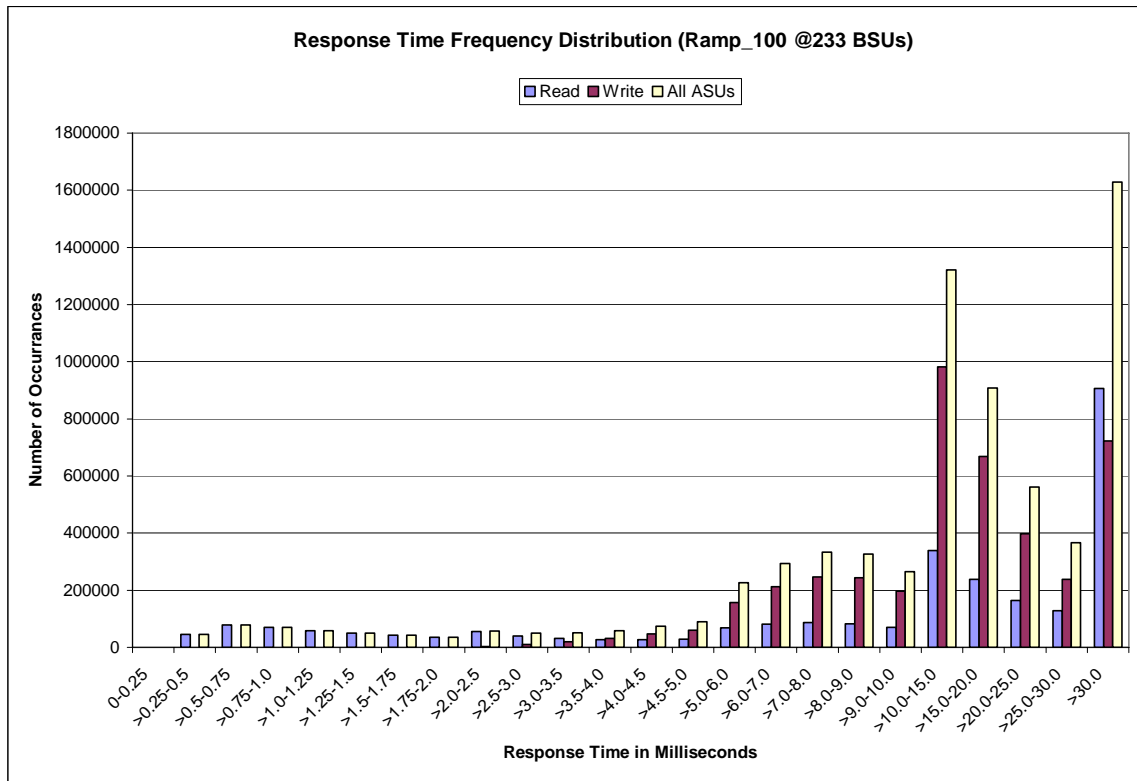
  

Response Time (ms)	>2.0-2.5	>2.5-3.0	>3.0-3.5	>3.5-4.0	>4.0-4.5	>4.5-5.0	>5.0-6.0	>6.0-7.0
Read	54,968	40,486	31,706	27,289	26,719	29,038	68,851	81,123
Write	2,252	9,385	19,244	31,539	46,731	60,307	157,251	211,989
All ASUs	57,220	49,871	50,950	58,828	73,450	89,345	226,102	293,112
ASU1	42,188	35,349	33,739	36,444	43,443	51,929	130,689	165,922
ASU2	14,210	10,728	8,834	8,293	8,939	9,518	22,568	29,358
ASU3	822	3,794	8,377	14,091	21,068	27,898	72,845	97,832

Response Time (ms)	>7.0-8.0	>8.0-9.0	>9.0-10.0	>10.0-15.0	>15.0-20.0	>20.0-25.0	>25.0-30.0	>30.0
Read	86,756	83,172	69,206	339,415	238,674	163,907	128,162	906,837
Write	246,289	243,119	196,431	981,437	668,670	397,887	237,641	722,621
All ASUs	333,045	326,291	265,637	1,320,852	907,344	561,794	365,803	1,629,458
ASU1	184,767	179,868	146,033	728,191	501,336	318,725	216,524	1,073,509
ASU2	34,585	33,958	28,882	139,538	94,089	57,692	38,019	218,985
ASU3	113,693	112,465	90,722	453,123	311,919	185,377	111,260	336,964

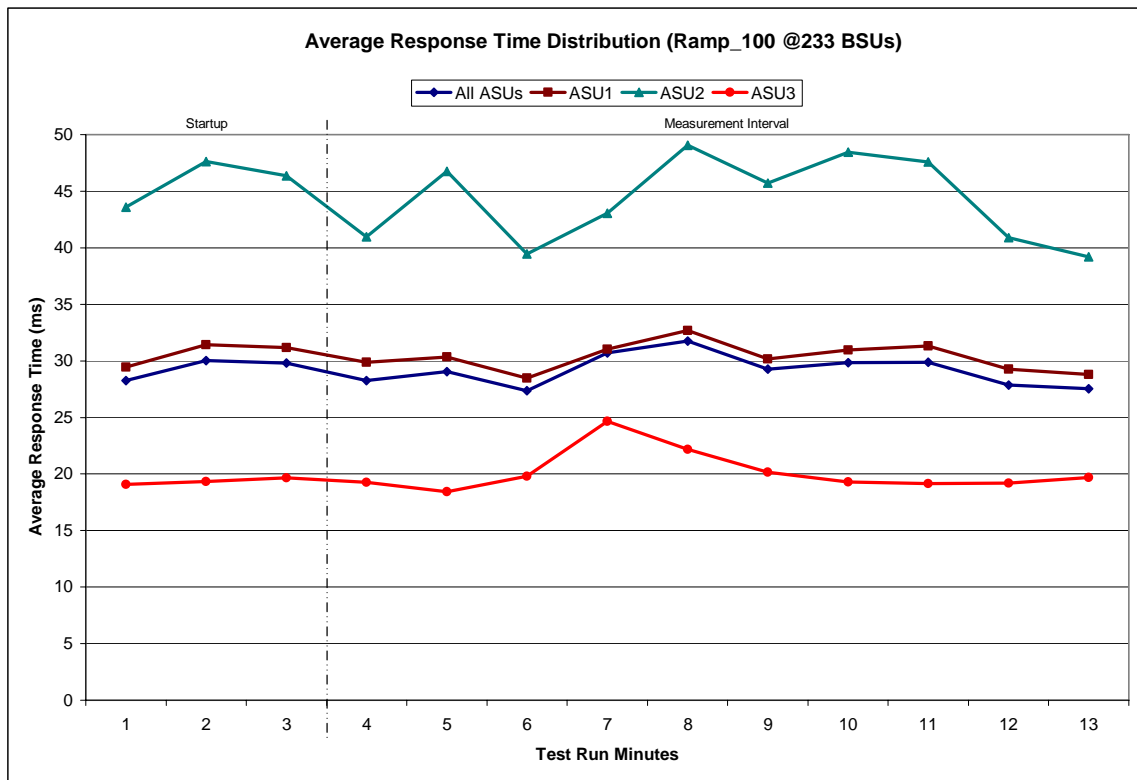
**IOPS Test Run –Response Time Frequency Distribution Graph**



**IOPS Test Run – Average Response Time (ms) Distribution Data**

233 BSUs	Start	Stop	Interval	Duration
<i>Start-Up/Ramp-Up</i>	3:45:52	3:48:53	0-2	0:03:01
<i>Measurement Interval</i>	3:48:53	3:58:53	3-12	0:10:00
60 second intervals	All ASUs	ASU1	ASU2	ASU3
0	28.26	29.43	43.60	19.09
1	30.02	31.42	47.62	19.35
2	29.79	31.17	46.37	19.67
3	28.26	29.87	40.97	19.28
4	29.04	30.34	46.76	18.44
5	27.36	28.47	39.45	19.78
6	30.71	31.02	43.05	24.64
7	31.74	32.68	49.05	22.19
8	29.26	30.18	45.70	20.14
9	29.84	30.96	48.47	19.29
10	29.89	31.31	47.57	19.17
11	27.86	29.27	40.90	19.17
12	27.54	28.82	39.21	19.71
<b>Average</b>	29.15	30.29	44.11	20.18

**IOPS Test Run – Average Response Time (ms) Distribution Graph**



**IOPS Test Run – I/O Request Information**

I/O Requests Completed in the Measurement Interval	I/O Requests Completed with Response Time = or < 30 ms	I/O Requests Completed with Response Time > 30 ms
6,988,250	5,358,792	1,629,458

**IOPS Test Run – Measured Intensity Multiplier and Coefficient of Variation**

	ASU1-1	ASU1-2	ASU1-3	ASU1-4	ASU2-1	ASU2-2	ASU2-3	ASU3-1
IM	0.0350	0.2810	0.0700	0.2100	0.0180	0.0700	0.0350	0.2810
MIM	0.0350	0.2814	0.0700	0.2099	0.0180	0.0700	0.0349	0.2808
COV	0.004	0.002	0.005	0.002	0.006	0.005	0.007	0.002

**IM – Intensity Multiplier:** The ratio of I/Os for each I/O stream relative to the total I/Os for all I/O streams (ASU1-1 – ASU3-1) as required by the benchmark specification.

**MIM – Measured Intensity Multiplier:** The Measured Intensity Multiplier represents the ratio of measured I/Os for each I/O stream relative to the total I/Os measured for all I/O streams (ASU1-1 – ASU3-1). This value may differ from the corresponding Expected Intensity Multiplier by no more than 5%.

**COV – Coefficient of Variation:** This measure of variation for the Measured Intensity Multiplier cannot exceed 0.2.

## Primary Metrics Test – Response Time Ramp Test Phase

### Clause 5.4.2.3

The Response Time Ramp Test Phase consists of five Test Runs, one each at 95%, 90%, 80%, 50%, and 10% of the load point (100%) used to generate the SPC-1 IOPS™ primary metric. Each of the five Test Runs has a Measurement Interval of ten (10) minutes. The Response Time Ramp Test Phase immediately follows the IOPS Test Phase without any interruption or manual intervention.

The five Response Time Ramp Test Runs, in conjunction with the IOPS Test Run (100%), demonstrate the relationship between Average Response Time and I/O Request Throughput for the Tested Storage Configuration (TSC) as illustrated in the response time/throughput curve on page 11.

In addition, the Average Response Time measured during the 10% Test Run is the value for the SPC-1 LRT™ primary metric. That value represents the Average Response Time of a lightly loaded TSC.

### Clause 9.2.4.7.3

The following content shall appear in the FDR for the Response Time Ramp Phase:

1. A Response Time Ramp Distribution.
2. The human readable Test Run Results File produced by the Workload Generator for each Test Run within the Response Time Ramp Test Phase.
3. For the 10% Load Level Test Run (SPC-1 LRT™ metric) an Average Response Time Distribution.
4. A listing or screen image of all input parameters supplied to the Workload Generator.

## SPC-1 Workload Generator Input Parameters

The SPC-1 Workload Generator input parameters for the Sustainability, IOPS, and Response Time Ramp Test Runs are documented in “Appendix D: SPC-1 Workload Generator Input Parameters” on Page 55.

## Response Time Ramp Test Results File

A link to each test result file generated from each Response Time Ramp Test Run list listed below.

[95% Load Level](#)

[90% Load Level](#)

[80% Load Level](#)

[50% Load Level](#)

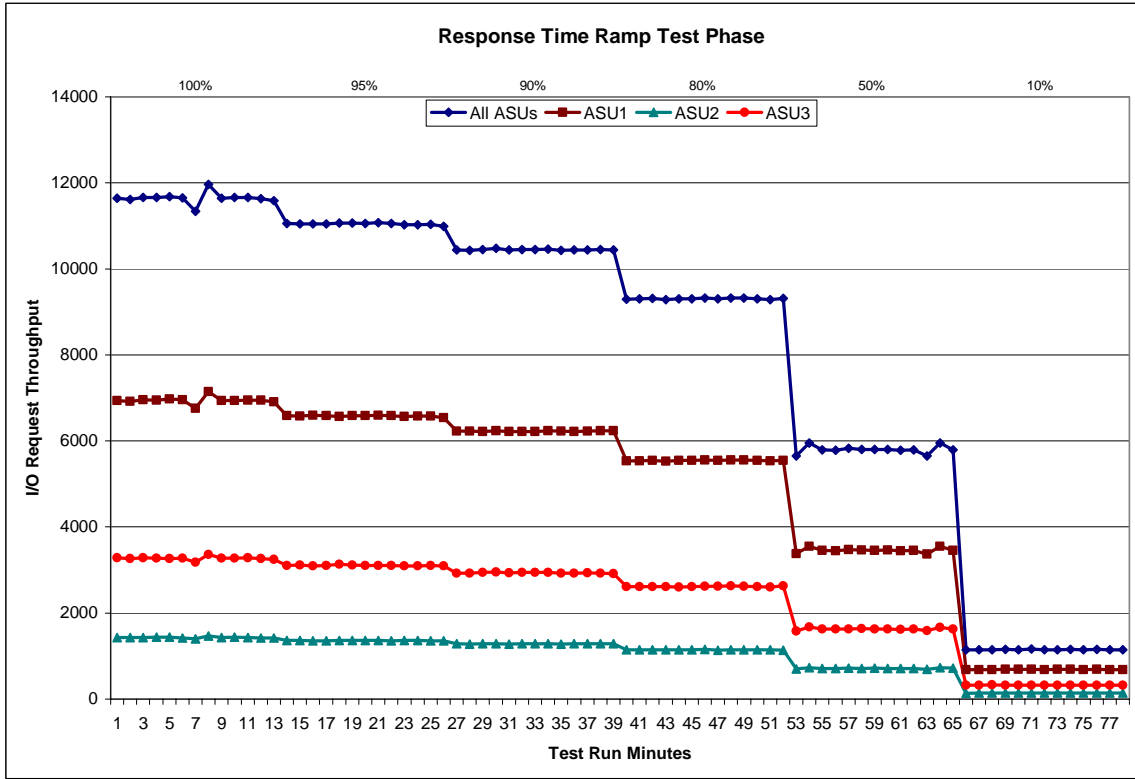
[10% Load Level](#)

**Response Time Ramp Distribution (IOPS) Data**

The five Test Runs that comprise the Response Time Ramp Phase are executed at 95%, 90%, 80%, 50%, and 10% of the Business Scaling Unit (BSU) load level used to produce the SPC-1 IOPS™ primary metric. The 100% BSU load level is included in the following Response Time Ramp data tables and graphs for completeness.

100% Load Level - 233 BSUs					95% Load Level - 221 BSUs				
	Start	Stop	Interval	Duration		Start	Stop	Interval	Duration
Start-Up/Ramp-Up	3:45:52	3:48:53	0-2	0:03:01	Start-Up/Ramp-Up	3:58:59	4:02:00	0-2	0:03:01
Measurement Interval	3:48:53	3:58:53	3-12	0:10:00	Measurement Interval	4:02:00	4:12:00	3-12	0:10:00
(60 second intervals)	All ASUs	ASU-1	ASU-2	ASU-3	(60 second intervals)	All ASUs	ASU-1	ASU-2	ASU-3
0	11,645.22	6,935.85	1,429.32	3,280.05	0	11,059.75	6,587.00	1,365.95	3,106.80
1	11,619.12	6,922.55	1,429.82	3,266.75	1	11,050.67	6,579.28	1,359.08	3,112.30
2	11,662.08	6,953.87	1,426.27	3,281.95	2	11,050.53	6,598.90	1,358.07	3,093.57
3	11,657.62	6,946.80	1,436.37	3,274.45	3	11,045.07	6,585.85	1,356.60	3,102.62
4	11,682.50	6,974.87	1,439.97	3,267.67	4	11,061.93	6,567.85	1,364.68	3,129.40
5	11,657.07	6,957.72	1,420.22	3,279.13	5	11,067.00	6,588.83	1,366.73	3,111.43
6	11,340.85	6,758.62	1,397.53	3,184.70	6	11,057.53	6,585.90	1,364.83	3,106.80
7	11,961.00	7,142.13	1,462.73	3,356.13	7	11,075.82	6,601.27	1,365.72	3,108.83
8	11,639.53	6,937.10	1,429.93	3,272.50	8	11,051.73	6,585.53	1,357.02	3,109.18
9	11,657.82	6,942.00	1,439.27	3,276.55	9	11,030.58	6,573.85	1,358.80	3,097.93
10	11,660.65	6,945.98	1,433.37	3,281.30	10	11,032.33	6,580.78	1,358.88	3,092.67
11	11,637.15	6,945.98	1,424.27	3,266.90	11	11,040.58	6,577.18	1,357.52	3,105.88
12	11,582.07	6,912.92	1,423.00	3,246.15	12	10,985.58	6,537.20	1,355.42	3,092.97
Average	11,647.63	6,946.41	1,430.67	3,270.55	Average	11,044.82	6,578.43	1,360.62	3,105.77
90% Load Level - 209 BSUs					80% Load Level - 186 BSUs				
	Start	Stop	Interval	Duration		Start	Stop	Interval	Duration
Start-Up/Ramp-Up	4:12:06	4:15:07	0-2	0:03:01	Start-Up/Ramp-Up	4:25:13	4:28:14	0-2	0:03:01
Measurement Interval	4:15:07	4:25:07	3-12	0:10:00	Measurement Interval	4:28:14	4:38:14	3-12	0:10:00
(60 second intervals)	All ASUs	ASU-1	ASU-2	ASU-3	(60 second intervals)	All ASUs	ASU-1	ASU-2	ASU-3
0	10,444.67	6,232.47	1,282.90	2,929.30	0	9,291.60	5,533.28	1,149.23	2,609.08
1	10,430.42	6,227.80	1,281.17	2,921.45	1	9,301.43	5,541.93	1,147.43	2,612.07
2	10,447.72	6,218.68	1,286.77	2,942.27	2	9,310.25	5,551.47	1,143.00	2,615.78
3	10,478.98	6,242.08	1,284.55	2,952.35	3	9,286.25	5,529.80	1,144.12	2,612.33
4	10,438.30	6,217.35	1,282.42	2,938.53	4	9,300.22	5,546.87	1,148.67	2,604.68
5	10,454.90	6,223.02	1,291.92	2,939.97	5	9,304.73	5,550.05	1,143.90	2,610.78
6	10,448.82	6,221.83	1,284.87	2,942.12	6	9,321.33	5,553.30	1,150.38	2,617.65
7	10,463.53	6,236.85	1,287.22	2,939.47	7	9,302.88	5,545.20	1,140.15	2,617.53
8	10,434.60	6,231.48	1,280.05	2,923.07	8	9,326.70	5,552.32	1,146.33	2,628.05
9	10,436.37	6,221.48	1,289.68	2,925.20	9	9,322.77	5,553.63	1,149.62	2,619.52
10	10,445.30	6,224.15	1,286.62	2,934.53	10	9,303.10	5,548.42	1,143.40	2,611.28
11	10,448.55	6,237.28	1,284.43	2,926.83	11	9,288.75	5,537.33	1,146.32	2,605.10
12	10,445.17	6,239.67	1,287.57	2,917.93	12	9,318.05	5,547.70	1,140.53	2,629.82
Average	10,449.45	6,229.52	1,285.93	2,934.00	Average	9,307.48	5,546.46	1,145.34	2,615.68
50% Load Level - 116 BSUs					10% Load Level - 23 BSUs				
	Start	Stop	Interval	Duration		Start	Stop	Interval	Duration
Start-Up/Ramp-Up	4:38:20	4:41:21	0-2	0:03:01	Start-Up/Ramp-Up	4:51:27	4:54:28	0-2	0:03:01
Measurement Interval	4:41:21	4:51:21	3-12	0:10:00	Measurement Interval	4:54:28	5:04:28	3-12	0:10:00
(60 second intervals)	All ASUs	ASU-1	ASU-2	ASU-3	(60 second intervals)	All ASUs	ASU-1	ASU-2	ASU-3
0	5,655.03	3,376.58	695.78	1,582.67	0	1,143.63	681.00	137.18	325.45
1	5,951.32	3,548.47	729.88	1,672.97	1	1,144.38	679.42	140.57	324.40
2	5,797.15	3,454.58	713.67	1,628.90	2	1,149.77	678.93	142.42	328.42
3	5,787.97	3,445.77	712.52	1,629.68	3	1,151.43	689.42	141.90	320.12
4	5,829.92	3,477.30	719.98	1,632.63	4	1,149.70	686.68	139.52	323.50
5	5,805.18	3,460.03	709.98	1,635.17	5	1,160.68	692.90	144.27	323.52
6	5,799.70	3,456.52	718.82	1,624.37	6	1,147.45	683.67	142.97	320.82
7	5,802.43	3,461.80	711.70	1,628.93	7	1,148.47	686.65	143.05	318.77
8	5,783.68	3,450.07	711.18	1,622.43	8	1,156.25	691.27	141.10	323.88
9	5,795.27	3,455.48	711.87	1,627.92	9	1,147.03	686.20	140.55	320.28
10	5,647.78	3,369.73	690.10	1,587.95	10	1,155.62	688.95	142.68	323.98
11	5,949.95	3,549.20	731.58	1,669.17	11	1,144.30	684.55	138.33	321.42
12	5,795.45	3,453.43	716.77	1,625.25	12	1,149.95	684.95	140.83	324.17
Average	5,799.73	3,457.93	713.45	1,628.35	Average	1,151.09	687.52	141.52	322.05

### Response Time Ramp Distribution (IOPS) Graph

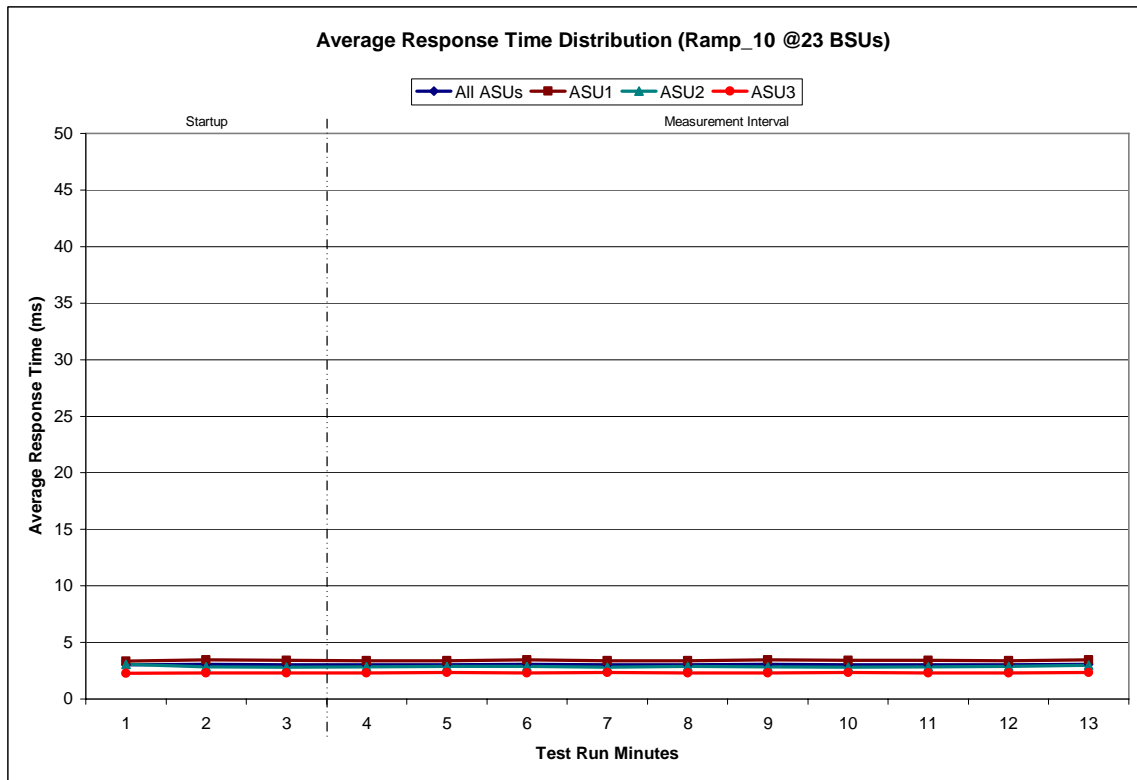




**SPC-1 LRT™ Average Response Time (ms) Distribution Data**

23 BSUs	Start	Stop	Interval	Duration
<i>Start-Up/Ramp-Up</i>	4:51:27	4:54:28	0-2	0:03:01
<i>Measurement Interval</i>	4:54:28	5:04:28	3-12	0:10:00
60 second intervals	All ASUs	ASU1	ASU2	ASU3
0	3.02	3.36	3.06	2.27
1	3.06	3.46	2.84	2.30
2	3.02	3.41	2.81	2.31
3	3.03	3.39	2.85	2.31
4	3.02	3.37	2.88	2.33
5	3.06	3.45	2.87	2.31
6	3.02	3.39	2.82	2.33
7	3.03	3.39	2.87	2.31
8	3.05	3.45	2.83	2.30
9	3.04	3.42	2.79	2.32
10	3.03	3.41	2.86	2.32
11	3.03	3.40	2.87	2.31
12	3.08	3.45	2.97	2.33
<b>Average</b>	3.04	3.41	2.86	2.32

**SPC-1 LRT™ Average Response Time (ms) Distribution Graph**



**SPC-1 LRT™ (10%) – Measured Intensity Multiplier and Coefficient of Variation**

	ASU1-1	ASU1-2	ASU1-3	ASU1-4	ASU2-1	ASU2-2	ASU2-3	ASU3-1
IM	0.0350	0.2810	0.0700	0.2100	0.0180	0.0700	0.0350	0.2810
MIM	0.0352	0.2820	0.0698	0.2102	0.0181	0.0701	0.0348	0.2798
COV	0.017	0.004	0.014	0.004	0.026	0.016	0.015	0.005

**IM – Intensity Multiplier:** The ratio of I/Os for each I/O stream relative to the total I/Os for all I/O streams (ASU1-1 – ASU3-1) as required by the benchmark specification.

**MIM – Measured Intensity Multiplier:** The Measured Intensity Multiplier represents the ratio of measured I/Os for each I/O stream relative to the total I/Os measured for all I/O streams (ASU1-1 – ASU3-1). This value may differ from the corresponding Expected Intensity Multiplier by no more than 5%.

**COV – Coefficient of Variation:** This measure of variation for the Measured Intensity Multiplier cannot exceed 0.2.

## Repeatability Test

### Clause 5.4.3

*The Repeatability Test demonstrates the repeatability and reproducibility of the SPC-1 IOPS™ and SPC-1 LRT™ primary metrics generated in earlier Test Runs.*

*There are two identical Repeatability Test Phases. Each Test Phase contains two Test Runs. Each of the Test Runs will have a Measurement Interval of no less than ten (10) minutes. The two Test Runs in each Test Phase will be executed without interruption or any type of manual intervention.*

*The first Test Run in each Test Phase is executed at the 10% load point. The Average Response Time from each of the Test Runs is compared to the SPC-1 LRT™ primary metric. Each Average Response Time value must be less than the SPC-1 LRT™ primary metric plus 5%.*

*The second Test Run in each Test Phase is executed at the 100% load point. The I/O Request Throughput from the Test Runs is compared to the SPC-1 IOPS™ primary metric. Each I/O Request Throughput value must be greater than the SPC-1 IOPS™ primary metric minus 5%. In addition, the Average Response Time for each Test Run cannot exceed 30 milliseconds.*

*If any of the above constraints are not met, the benchmark measurement is invalid.*

### Clause 9.2.4.7.3

*The following content shall appear in the FDR for each Test Run in the two Repeatability Test Phases:*

- 1. A table containing the results of the two Repeatability Test Phases. The content, appearance, and format of the table are specified in Table 9-11.*
- 2. An I/O Request Throughput Distribution (data and graph).*
- 3. An Average Response Time Distribution (data and graph).*
- 4. The human readable Test Run Results File produced by the Workload Generator.*
- 5. A listing or screen image of all input parameters supplied to the Workload Generator.*

## SPC-1 Workload Generator Input Parameters

The SPC-1 Workload Generator input parameters for the Repeatability Test Runs are documented in “Appendix D: SPC-1 Workload Generator Input Parameters” on Page 55.

### Repeatability Test Results File

The values for the SPC-1 IOPS™, SPC-1 LRT™, and the Repeatability Test measurements are listed below.

	SPC-1 IOPS™	SPC-1 LRT™
<i>Primary Metrics</i>	11,647.63	3.04
Repeatability Test Phase 1	11,642.59	3.03
Repeatability Test Phase 2	11,664.42	3.03

A link to the test result file generated from each Repeatability Test Run list is listed below.

[Repeatability Test Phase 1, Test Run 1 \(LRT\)](#)

[Repeatability Test Phase 1, Test Run 2 \(IOPS\)](#)

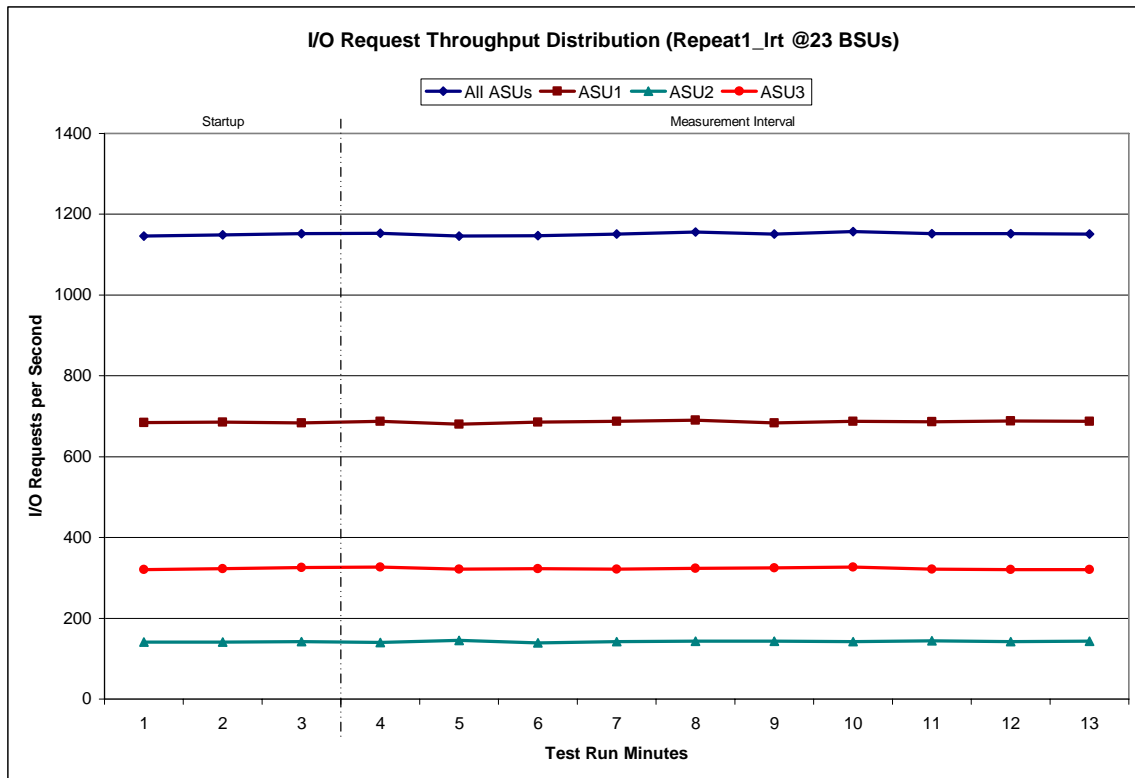
[Repeatability Test Phase 2, Test Run 1 \(LRT\)](#)

[Repeatability Test Phase 2, Test Run 2 \(IOPS\)](#)

**Repeatability 1 LRT - I/O Request Throughput Distribution Data**

23 BSUs	Start	Stop	Interval	Duration
<i>Start-Up/Ramp-Up</i>	5:04:49	5:07:49	0-2	0:03:00
<i>Measurement Interval</i>	5:07:49	5:17:49	3-12	0:10:00
60 second intervals	All ASUs	ASU1	ASU2	ASU3
0	1,146.42	684.73	141.12	320.57
1	1,149.17	685.22	141.37	322.58
2	1,151.75	683.42	142.53	325.80
3	1,153.47	686.95	140.07	326.45
4	1,146.48	680.17	144.78	321.53
5	1,147.03	685.88	139.02	322.13
6	1,151.25	687.83	141.68	321.73
7	1,156.57	690.18	143.05	323.33
8	1,150.87	683.18	143.08	324.60
9	1,156.83	687.90	142.45	326.48
10	1,151.70	686.50	143.82	321.38
11	1,152.33	688.90	142.47	320.97
12	1,151.50	687.88	143.08	320.53
<b>Average</b>	1,151.80	686.54	142.35	322.92

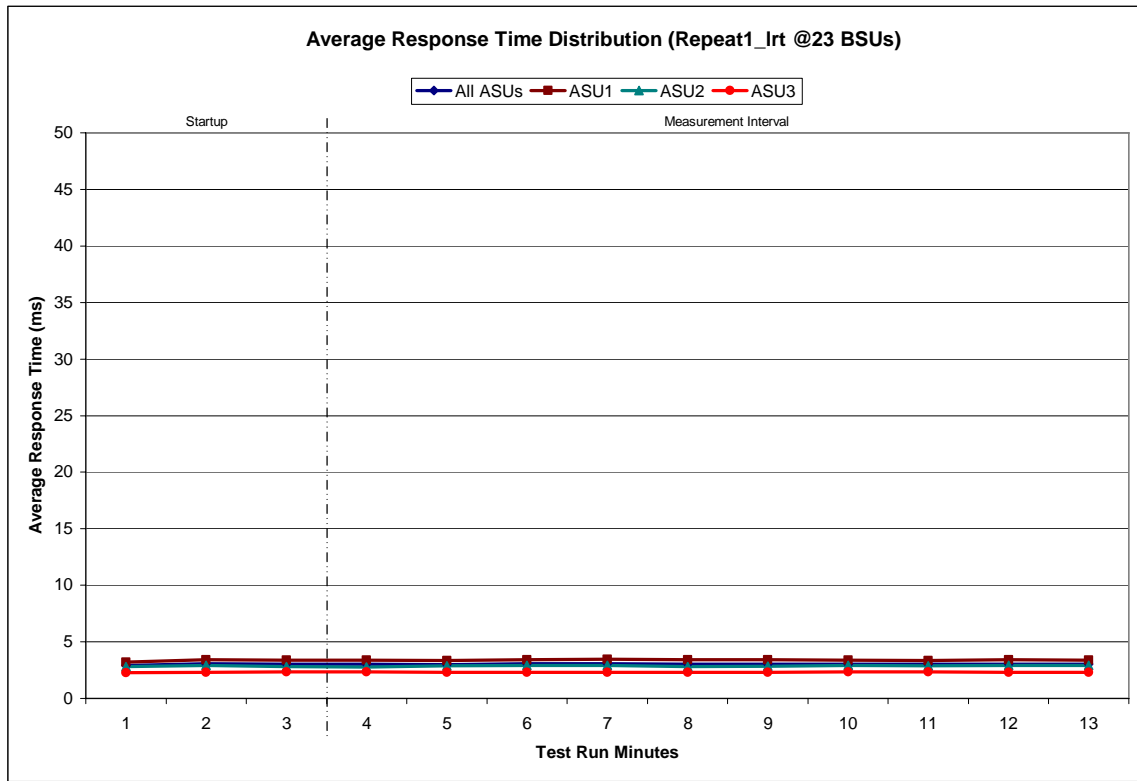
**Repeatability 1 LRT - I/O Request Throughput Distribution Graph**



**Repeatability 1 LRT –Average Response Time (ms) Distribution Data**

23 BSUs	Start	Stop	Interval	Duration
<i>Start-Up/Ramp-Up</i>	5:04:49	5:07:49	0-2	0:03:00
<i>Measurement Interval</i>	5:07:49	5:17:49	3-12	0:10:00
60 second intervals	All ASUs	ASU1	ASU2	ASU3
0	2.90	3.21	2.81	2.28
1	3.05	3.43	2.92	2.31
2	3.02	3.39	2.81	2.34
3	3.02	3.40	2.78	2.33
4	3.00	3.36	2.89	2.30
5	3.06	3.43	2.90	2.32
6	3.06	3.44	2.91	2.29
7	3.03	3.41	2.82	2.31
8	3.03	3.41	2.84	2.32
9	3.03	3.39	2.90	2.33
10	3.02	3.36	2.89	2.34
11	3.04	3.41	2.90	2.29
12	3.04	3.40	2.93	2.30
<b>Average</b>	3.03	3.40	2.88	2.31

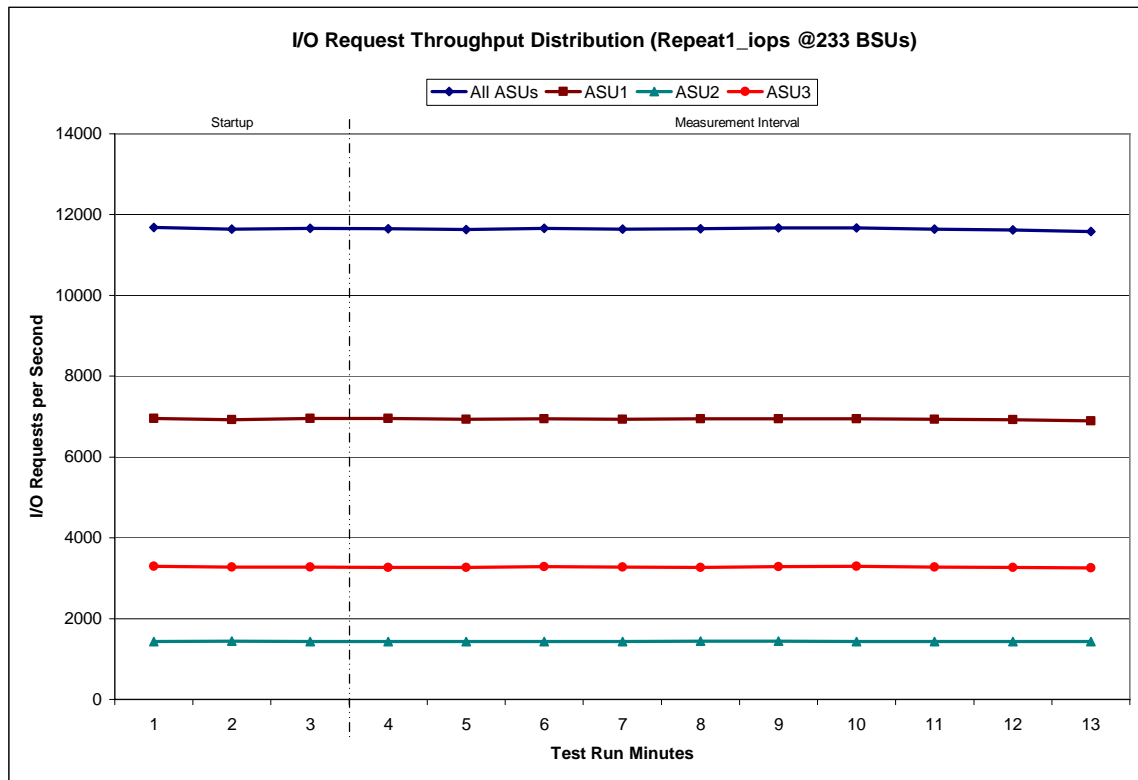
**Repeatability 1 LRT –Average Response Time (ms) Distribution Graph**



**Repeatability 1 IOPS - I/O Request Throughput Distribution Data**

233 BSUs				
	Start	Stop	Interval	Duration
<i>Start-Up/Ramp-Up</i>	5:17:55	5:20:56	0-2	0:03:01
<i>Measurement Interval</i>	5:20:56	5:30:56	3-12	0:10:00
60 second intervals	All ASUs	ASU1	ASU2	ASU3
0	11,676.77	6,952.87	1,431.20	3,292.70
1	11,636.80	6,922.87	1,438.23	3,275.70
2	11,661.18	6,953.75	1,427.10	3,280.33
3	11,655.80	6,955.97	1,434.30	3,265.53
4	11,631.57	6,933.83	1,434.22	3,263.52
5	11,657.08	6,942.28	1,433.45	3,281.35
6	11,640.82	6,938.87	1,429.47	3,272.48
7	11,651.28	6,947.30	1,436.77	3,267.22
8	11,676.57	6,945.35	1,444.17	3,287.05
9	11,669.80	6,948.73	1,428.83	3,292.23
10	11,643.63	6,939.37	1,432.33	3,271.93
11	11,622.88	6,920.73	1,436.03	3,266.12
12	11,576.48	6,894.75	1,426.85	3,254.88
<b>Average</b>	11,642.59	6,936.72	1,433.64	3,272.23

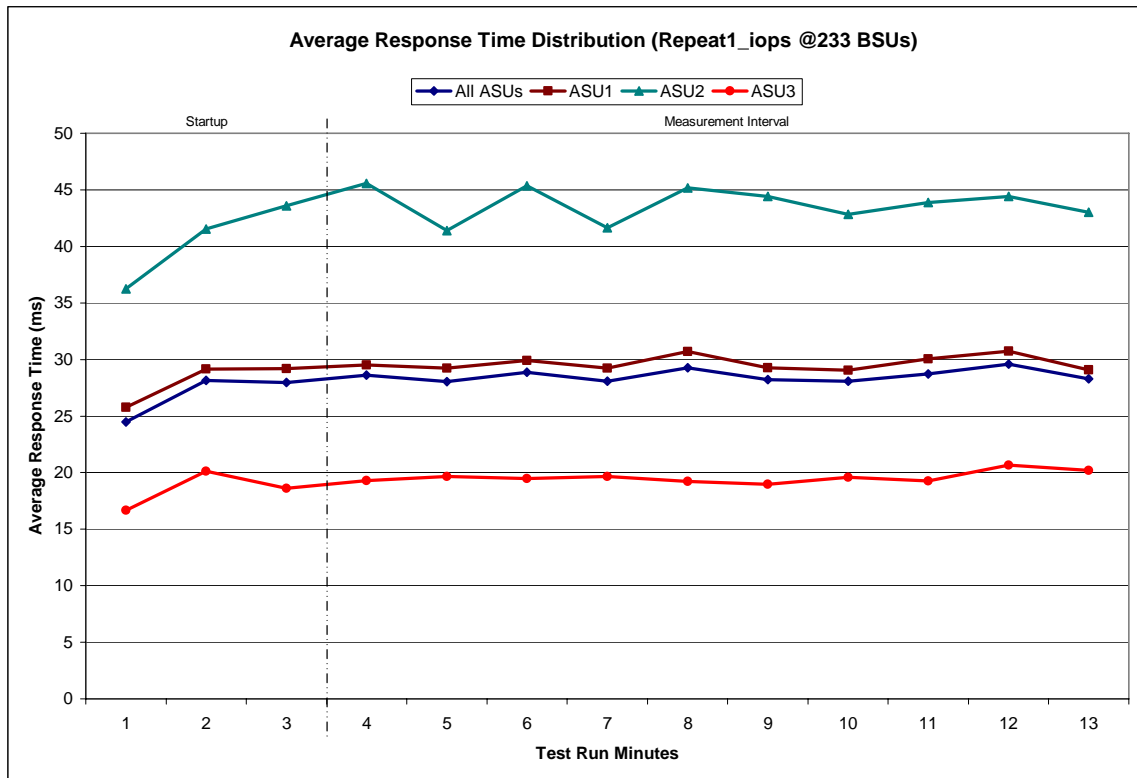
**Repeatability 1 IOPS - I/O Request Throughput Distribution Graph**



**Repeatability 1 IOPS –Average Response Time (ms) Distribution Data**

233 BSUs		Start	Stop	Interval	Duration
<i>Start-Up/Ramp-Up</i>		5:17:55	5:20:56	0-2	0:03:01
<i>Measurement Interval</i>		5:20:56	5:30:56	3-12	0:10:00
60 second intervals	All ASUs	ASU1	ASU2	ASU3	
0	24.49	25.78	36.25	16.66	
1	28.16	29.17	41.56	20.14	
2	27.98	29.20	43.58	18.60	
3	28.63	29.53	45.57	19.28	
4	28.05	29.23	41.41	19.66	
5	28.86	29.90	45.35	19.46	
6	28.07	29.24	41.64	19.65	
7	29.26	30.69	45.19	19.22	
8	28.24	29.27	44.42	18.95	
9	28.08	29.07	42.85	19.58	
10	28.73	30.06	43.89	19.27	
11	29.59	30.74	44.40	20.65	
12	28.29	29.08	43.01	20.18	
<b>Average</b>	28.58	29.68	43.77	19.59	

**Repeatability 1 IOPS –Average Response Time (ms) Distribution Graph**

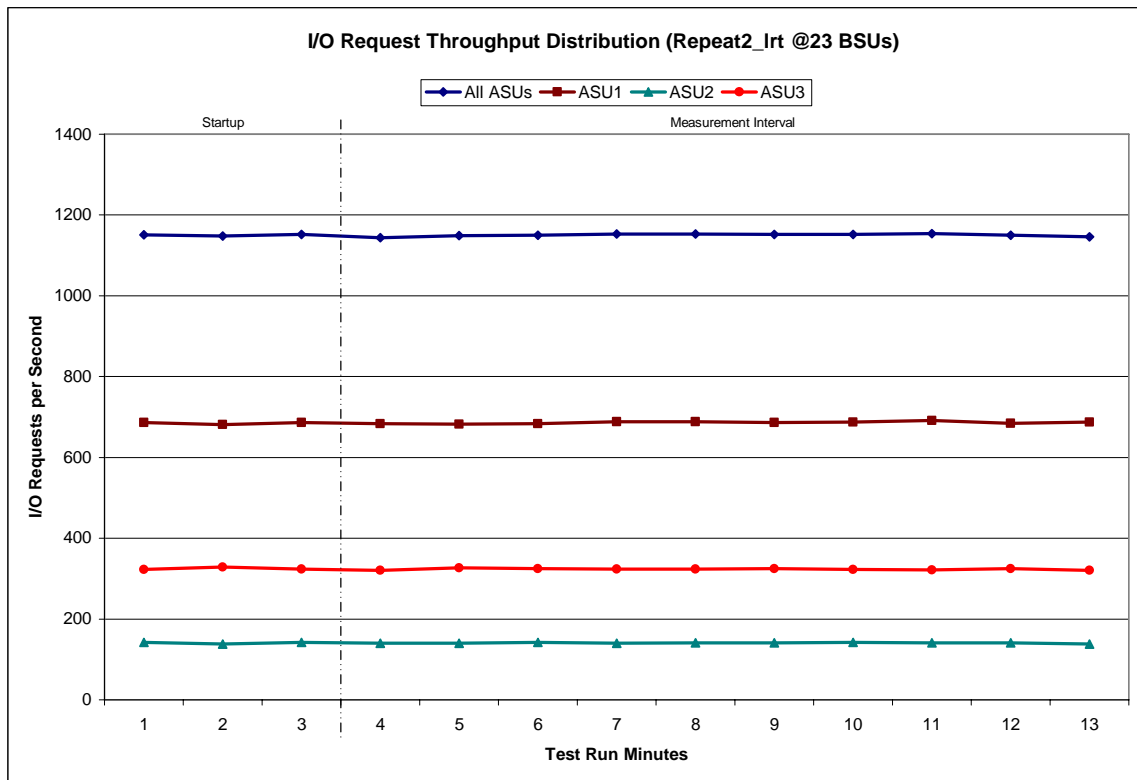




**Repeatability 2 LRT - I/O Request Throughput Distribution Data**

23 BSUs	Start	Stop	Interval	Duration
<i>Start-Up/Ramp-Up</i>	5:31:17	5:34:17	0-2	0:03:00
<i>Measurement Interval</i>	5:34:17	5:44:17	3-12	0:10:00
60 second intervals	All ASUs	ASU1	ASU2	ASU3
0	1,151.00	686.33	142.35	322.32
1	1,148.17	680.95	138.25	328.97
2	1,152.50	686.52	142.37	323.62
3	1,143.70	683.33	139.70	320.67
4	1,148.98	682.52	139.62	326.85
5	1,149.80	682.92	142.45	324.43
6	1,152.85	688.73	140.23	323.88
7	1,153.33	688.73	141.08	323.52
8	1,152.45	686.55	141.33	324.57
9	1,151.98	687.02	142.23	322.73
10	1,153.68	690.98	140.93	321.77
11	1,150.08	684.53	141.20	324.35
12	1,146.20	687.33	138.33	320.53
<b>Average</b>	1,150.31	686.27	140.71	323.33

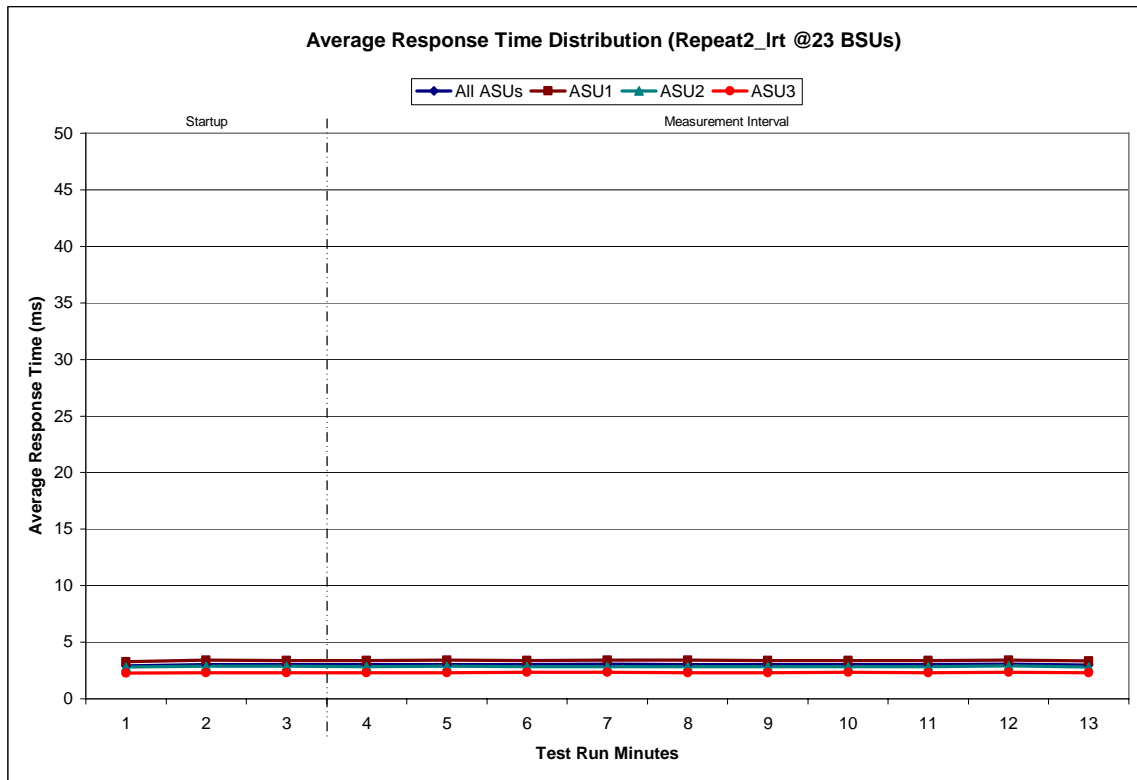
**Repeatability 2 LRT - I/O Request Throughput Distribution Graph**



**Repeatability 2 LRT –Average Response Time (ms) Distribution Data**

23 BSUs	Start	Stop	Interval	Duration
<i>Start-Up/Ramp-Up</i>	5:31:17	5:34:17	0-2	0:03:00
<i>Measurement Interval</i>	5:34:17	5:44:17	3-12	0:10:00
60 second intervals	All ASUs	ASU1	ASU2	ASU3
0	2.93	3.26	2.81	2.27
1	3.04	3.43	2.86	2.29
2	3.03	3.39	2.88	2.32
3	3.02	3.38	2.85	2.31
4	3.03	3.41	2.87	2.31
5	3.02	3.38	2.85	2.33
6	3.05	3.42	2.83	2.34
7	3.04	3.42	2.85	2.31
8	3.01	3.37	2.84	2.32
9	3.03	3.40	2.84	2.34
10	3.03	3.40	2.83	2.31
11	3.05	3.41	2.90	2.33
12	3.00	3.36	2.82	2.31
<b>Average</b>	3.03	3.40	2.85	2.32

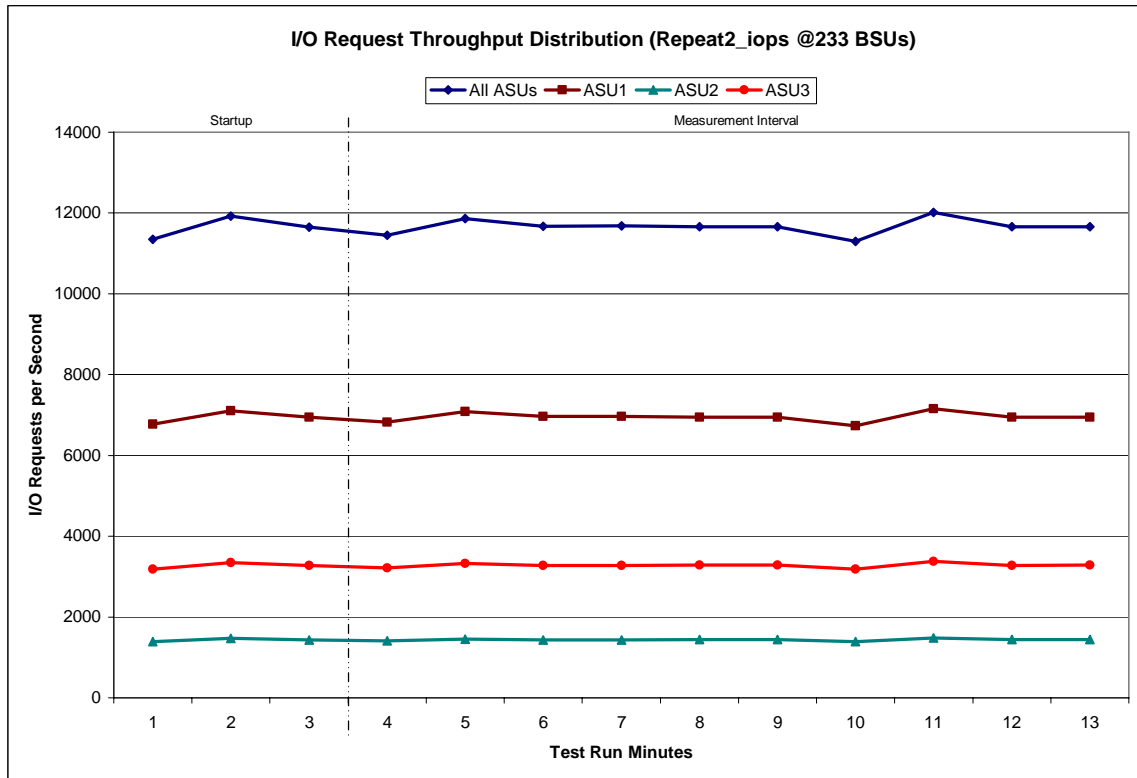
**Repeatability 2 LRT –Average Response Time (ms) Distribution Graph**



**Repeatability 2 IOPS - I/O Request Throughput Distribution Data**

233 BSUs				
	Start	Stop	Interval	Duration
<i>Start-Up/Ramp-Up</i>	5:44:23	5:47:24	0-2	0:03:01
<i>Measurement Interval</i>	5:47:24	5:57:24	3-12	0:10:00
60 second intervals	All ASUs	ASU1	ASU2	ASU3
0	11,349.40	6,770.57	1,395.95	3,182.88
1	11,919.45	7,101.80	1,469.35	3,348.30
2	11,646.80	6,945.10	1,427.87	3,273.83
3	11,453.68	6,823.75	1,410.38	3,219.55
4	11,865.82	7,082.02	1,455.02	3,328.78
5	11,671.57	6,960.63	1,435.70	3,275.23
6	11,680.42	6,965.85	1,434.37	3,280.20
7	11,665.92	6,948.40	1,436.70	3,280.82
8	11,663.73	6,940.33	1,441.20	3,282.20
9	11,301.45	6,730.00	1,387.82	3,183.63
10	12,013.32	7,153.57	1,481.40	3,378.35
11	11,663.57	6,945.23	1,443.62	3,274.72
12	11,664.77	6,943.32	1,437.10	3,284.35
<b>Average</b>	11,664.42	6,949.31	1,436.33	3,278.78

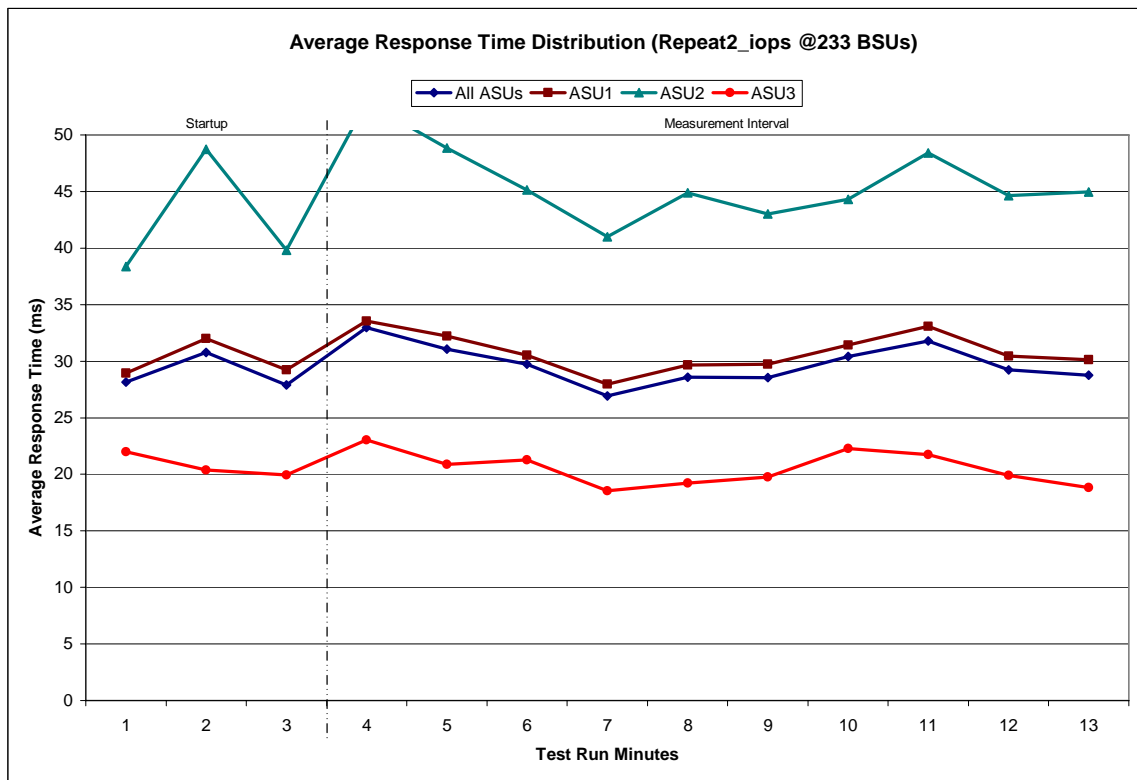
**Repeatability 2 IOPS - I/O Request Throughput Distribution Graph**



**Repeatability 2 IOPS –Average Response Time (ms) Distribution Data**

233 BSUs		Start	Stop	Interval	Duration
<i>Start-Up/Ramp-Up</i>		5:44:23	5:47:24	0-2	0:03:01
<i>Measurement Interval</i>		5:47:24	5:57:24	3-12	0:10:00
60 second intervals	All ASUs	ASU1	ASU2	ASU3	
0	28.16	28.95	38.38	21.99	
1	30.79	32.00	48.73	20.36	
2	27.91	29.21	39.80	19.94	
3	32.97	33.55	52.89	23.03	
4	31.07	32.22	48.85	20.86	
5	29.72	30.51	45.14	21.27	
6	26.92	27.97	41.02	18.53	
7	28.60	29.66	44.89	19.22	
8	28.56	29.72	43.02	19.75	
9	30.43	31.42	44.32	22.28	
10	31.77	33.06	48.43	21.74	
11	29.25	30.44	44.65	19.92	
12	28.77	30.12	44.97	18.81	
<b>Average</b>	29.81	30.87	45.82	20.54	

**Repeatability 2 IOPS –Average Response Time (ms) Distribution Graph**



**Repeatability 1 (LRT)**

**Measured Intensity Multiplier and Coefficient of Variation**

	ASU1-1	ASU1-2	ASU1-3	ASU1-4	ASU2-1	ASU2-2	ASU2-3	ASU3-1
IM	0.0350	0.2810	0.0700	0.2100	0.0180	0.0700	0.0350	0.2810
MIM	0.0348	0.2810	0.0697	0.2105	0.0181	0.0701	0.0354	0.2804
COV	0.018	0.005	0.011	0.008	0.018	0.020	0.012	0.006

**IM - Intensity Multiplier:** The ratio of I/Os for each I/O stream relative to the total I/Os for all I/O streams (ASU1-1 – ASU3-1) as required by the benchmark specification.

**MIM - Measured Intensity Multiplier:** The Measured Intensity Multiplier represents the ratio of measured I/Os for each I/O stream relative to the total I/Os measured for all I/O streams (ASU1-1 – ASU3-1). This value may differ from the corresponding Expected Intensity Multiplier by no more than 5%.

**COV - Coefficient of Variation:** This measure of variation for the Measured Intensity Multiplier cannot exceed 0.2.

**Repeatability 1 (IOPS)**

**Measured Intensity Multiplier and Coefficient of Variation**

	ASU1-1	ASU1-2	ASU1-3	ASU1-4	ASU2-1	ASU2-2	ASU2-3	ASU3-1
IM	0.0350	0.2810	0.0700	0.2100	0.0180	0.0700	0.0350	0.2810
MIM	0.0349	0.2812	0.0700	0.2097	0.0181	0.0700	0.0350	0.2811
COV	0.005	0.002	0.005	0.002	0.009	0.004	0.007	0.002

**Repeatability 2 (LRT)**

**Measured Intensity Multiplier and Coefficient of Variation**

	ASU1-1	ASU1-2	ASU1-3	ASU1-4	ASU2-1	ASU2-2	ASU2-3	ASU3-1
IM	0.0350	0.2810	0.0700	0.2100	0.0180	0.0700	0.0350	0.2810
MIM	0.0354	0.2807	0.0697	0.2107	0.0179	0.0699	0.0345	0.2811
COV	0.021	0.006	0.007	0.003	0.021	0.010	0.019	0.006

**Repeatability 2 (IOPS)**

**Measured Intensity Multiplier and Coefficient of Variation**

	ASU1-1	ASU1-2	ASU1-3	ASU1-4	ASU2-1	ASU2-2	ASU2-3	ASU3-1
IM	0.0350	0.2810	0.0700	0.2100	0.0180	0.0700	0.0350	0.2810
MIM	0.0350	0.2808	0.0699	0.2101	0.0181	0.0701	0.0350	0.2811
COV	0.006	0.002	0.006	0.002	0.007	0.004	0.006	0.001

## Data Persistence Test

### Clause 6

*The Data Persistence Test demonstrates the Tested Storage Configuration (TSC):*

- *Is capable of maintain data integrity across a power cycle.*
- *Ensures the transfer of data between Logical Volumes and host systems occurs without corruption or loss.*

*The SPC-1 Workload Generator will write 16 block I/O requests at random over the total Addressable Storage Capacity of the TSC for ten (10) minutes at a minimum of 25% of the load used to generate the SPC-1 IOP™ primary metric. The bit pattern selected to be written to each block as well as the address of the block will be retained in a log file.*

*The Benchmark Configuration will be shutdown and restarted using a power off/power on cycle at the end of the above sequence of write operations. In addition, any caches employing battery backup must be flushed/emptied.*

*The SPC-1 Workload Generator will then use the above log file to verify each block written contains the correct bit pattern.*

### Clause 9.2.4.8

*The following content shall appear in this section of the FDR:*

1. *A listing or screen image of all input parameters supplied to the Workload Generator.*
2. *For the successful Data Persistence Test Run, a table illustrating key results. The content, appearance, and format of this table are specified in Table 9-12. Information displayed in this table shall be obtained from the Test Run Results File referenced below in #3.*
3. *For the successful Data Persistence Test Run, the human readable Test Run Results File produced by the Workload Generator.*

## SPC-1 Workload Generator Input Parameters

The SPC-1 Workload Generator input parameters for the Persistence Test Run 1 is listed below and the input parameters for Persistence Test Run 2 is documented in “Appendix D: SPC-1 Workload Generator Input Parameters” on Page 55.

```
java -Xmx512 persist1 -b 234
```

## Data Persistence Test Results File

A link to each test result file generated from each Data Persistence Test is listed below.

[Persistence 1 Test Results File](#)

[Persistence 2 Test Results File](#)

### Data Persistence Test Results

<b>Data Persistence Test Results</b>	
Data Persistence Test Run Number: 1	
Total Number of Logical Blocks Written	27,854,272
Total Number of Logical Blocks Verified	23,143,296
Total Number of Logical Blocks that Failed Verification	0
Time Duration for Writing Test Logical Blocks	10 minutes
Size in Bytes of each Logical Block	512
Number of Failed I/O Requests in the process of the Test	0

In some cases the same address was the target of multiple writes, which resulted in more Logical Blocks Written than Logical Blocks Verified. In the case of multiple writes to the same address, the pattern written and verified must be associated with the last write to that address.

## **PRICED STORAGE CONFIGURATION AVAILABILITY DATE**

### Clause 9.2.4.9

*The committed delivery data for general availability (Availability Date) of all products that comprise the Priced Storage Configuration must be reported. When the Priced Storage Configuration includes products or components with different availability dates, the reported Availability Date must be the date at which all components are committed to be available.*

*The FDR shall state: "The Priced Storage Configuration, as documented in this Full Disclosure Report will be available for shipment to customers on MMMM DD, YYYY." Where Priced Storage Configuration is the TSC Configuration Name as described in Clause 9.2.4.3.3 and MMMM is the alphanumeric month, DD is the numeric day, and YYYY is the numeric year of the date that the Priced Storage Configuration, as documented, is available for shipment to customers as described above.*

The Sun StorEdge™ 3510, as documented in this Full Disclosure Report became available for customer purchase and shipment on March 22, 2004.

## **PRICING INFORMATION**

### Clause 9.2.4.11

*A statement of the respective calculations for pricing must be included.*

Pricing information may found in the Tested Storage Configuration Pricing section on page 12.

## **ANOMALIES OR IRREGULARITIES**

### Clause 9.2.4.10

*The FDR shall include a clear and complete description of any anomalies or irregularities encountered in the course of executing the SPC-1 benchmark that may in any way call into question the accuracy, verifiability, or authenticity of information published in this FDR.*

There were no anomalies or irregularities encountered during the SPC-1 Onsite Audit of the Sun StorEdge™ 3510.



## **APPENDIX A: CUSTOMER TUNABLE PARAMETERS AND OPTIONS**

The following settings were made in the Solaris "/etc/system" control file information for execution of the SPC-1 Workload Generator on the Star Fire™ 4800:

```
*ident      "@(#)system  1.18  97/06/27 SMI" /* SVR4 1.5 */
*
* SYSTEM SPECIFICATION FILE
*
* moddir:
*
*   Set the search path for modules.  This has a format similar to the
*   csh path variable.  If the module isn't found in the first directory
*   it tries the second and so on.  The default is /kernel /usr/kernel
*
*   Example:
*       moddir: /kernel /usr/kernel /other/modules
*
* root device and root filesystem configuration:
*
*   The following may be used to override the defaults provided by
*   the boot program:
*
*   rootfs:          Set the filesystem type of the root.
*
*   rootdev:        Set the root device.  This should be a fully
*                   expanded physical pathname.  The default is the
*                   physical pathname of the device where the boot
*                   program resides.  The physical pathname is
*                   highly platform and configuration dependent.
*
*   Example:
*       rootfs:ufs
*       rootdev:/sbus@1,f8000000/esp@0,800000/sd@3,0:a
*
*   (Swap device configuration should be specified in /etc/vfstab.)
*
* exclude:
*
*   Modules appearing in the moddir path which are NOT to be loaded,
*   even if referenced.  Note that `exclude' accepts either a module name,
*   or a filename which includes the directory.
*
*   Examples:
*       exclude: win
*       exclude: sys/shmsys
*
* forceload:
*
*   Cause these modules to be loaded at boot time, (just before mounting
*   the root filesystem) rather than at first reference.  Note that
*   forceload expects a filename which includes the directory.  Also
*   note that loading a module does not necessarily imply that it will
*   be installed.
*
```

```
* Example:
*     forceload: drv/foo

* set:
*
* Set an integer variable in the kernel or a module to a new value.
* This facility should be used with caution. See system(4).
*
* Examples:
*
* To set variables in 'unix':
*
*     set nautopush=32
*     set maxusers=40
*
* To set a variable named 'debug' in the module named 'test_module'
*
*     set test_module:debug = 0x13

* ITOps add
set noexec_user_stack = 1
set noexec_user_stack_log = 1
* end ITOps add
*** IPC semaphores
set semsys:seminfo_semmap=4096
set semsys:seminfo_semmni=4096
set semsys:seminfo_semmns=4096
set semsys:seminfo_semmnu=4096
set semsys:seminfo_semume=64
set semsys:seminfo_semmsl=256

* IPC messages
set msgsys:msginfo_msgmap=4096
set msgsys:msginfo_msgmni=4096
set msgsys:msginfo_msgssz=64
set msgsys:msginfo_msgtql=40000

* pt_cnt : pseudo terminals are allocated dynamically
* set hard limit on file descriptors
* set rlim_fd_max = 8192
* set soft limit on file descriptors
set rlim_fd_cur = 1024

* buffer high water mark: limits the amount of RAM devoted to headers cache.
set bufhwm = 8000

* increase capability to do 1Mb IOs to *raw* devices, 32MB max.
*set maxphys = 1048576
set maxphys = 4194304

* Memory allocation parameters
set vxio:voliomem_chunk_size = 1048576
set vxio:voliomem_maxpool_sz = 134217728
* I/O related parameters
set vxio:vol_default_iodelay = 10
set vxio:vol_maxkiocount = 32768
set vxio:vol_maxioctl = 131072
set vxio:vol_maxio = 8192
set vxio:vol_maxspecialio = 10240

* VM related
```

```
* scanner I/Os per second page-outs.(default 65536 for E10000)
* set maxpgio = 16384
* # of pages the scanned when freelist falls below lotsfree.
* set to 1/16 to 1/4 RAM up to 1Gb/sec (131072)
*set fastscan = 65536
**Fri Mar 31 16:07:32 PST 2000
* R. McDougall: increase maxpgio to prevent the scanner from limiting writes
set maxpgio = 65536
* R. McDougall: increase fastscan to limit the effect the page scanner
* has on file system throughput
set fastscan = 65536

* UFS related
* filesystem write throttling high/low watermark
* R. McDougall: set the write throttle higher for large systems > 1GB of RAM
*
set ufs:ufs_HW = 20971520
set ufs:ufs_LW = 15728640

* cool fsflushr on big memory memory machines
set autoup = 1024
set tune_t_fsflushr = 1

* TCP related
* decrease potential connection backlog by:
* 1. increase connection hash table size, increase if connections are high.
set tcp:tcp_conn_hash_size = 32768
* 2. depth of destination queue (# of messages outbound streams can hold)
* NOTE: sq_max_size = 0 is unlimited, but uses more kernel memory.
set sq_max_size = 100
*
set sdd:sdd_max_throttle=256
set maxphys = 8388608
set sd:sd_max_throttle=256
set qlc:qlc_enable_pm= 0x0
set qlc:qlc_execution_throttle=256

* ITOps add
set noexec_user_stack = 1
set noexec_user_stack_log = 1
* end ITOps add
* vxvm_START (do not remove)
forceload: drv/vxdmp
forceload: drv/vxio
forceload: drv/vxspec
* vxvm_END (do not remove)
```

## **APPENDIX B: TESTED STORAGE CONFIGURATION (TSC) CREATION**

The Sun StorEdge 3510 Configurator was used to create two 325.330 GB volumes, one each mapped to the primary and secondary controller. Each volume utilized the available capacity from 18 physical disk drives. Each disk drive contained 36.704 GB of formatted storage, reduced to 36.419 GB of available storage due to 0.285 GB of the formatted storage reserved for various storage overhead requirements.

Each volume was divided into three RAID 1 partitions as follows:

### **Volume 1**

Partition 1 – 146.370 GB  
Partition 2 – 145.457 GB  
Partition 3 – 32.504 GB

### **Volume 2**

Partition 1 – 146.370 GB  
Partition 2 – 145.457 GB  
Partition 3 – 32.504 GB

The six partitions were used by the Solaris Volume Manager (SVM) to create three Logical Volumes as follows:

- Logical Volume 1: 292.552 GB (*Partition 1, Volume 1 and 2*)
- Logical Volume 2: 292.760 GB (*Partition 2, Volume 1 and 2*)
- Logical Volume 3: 64.802 GB (*Partition 3, Volume 1 and 2*)

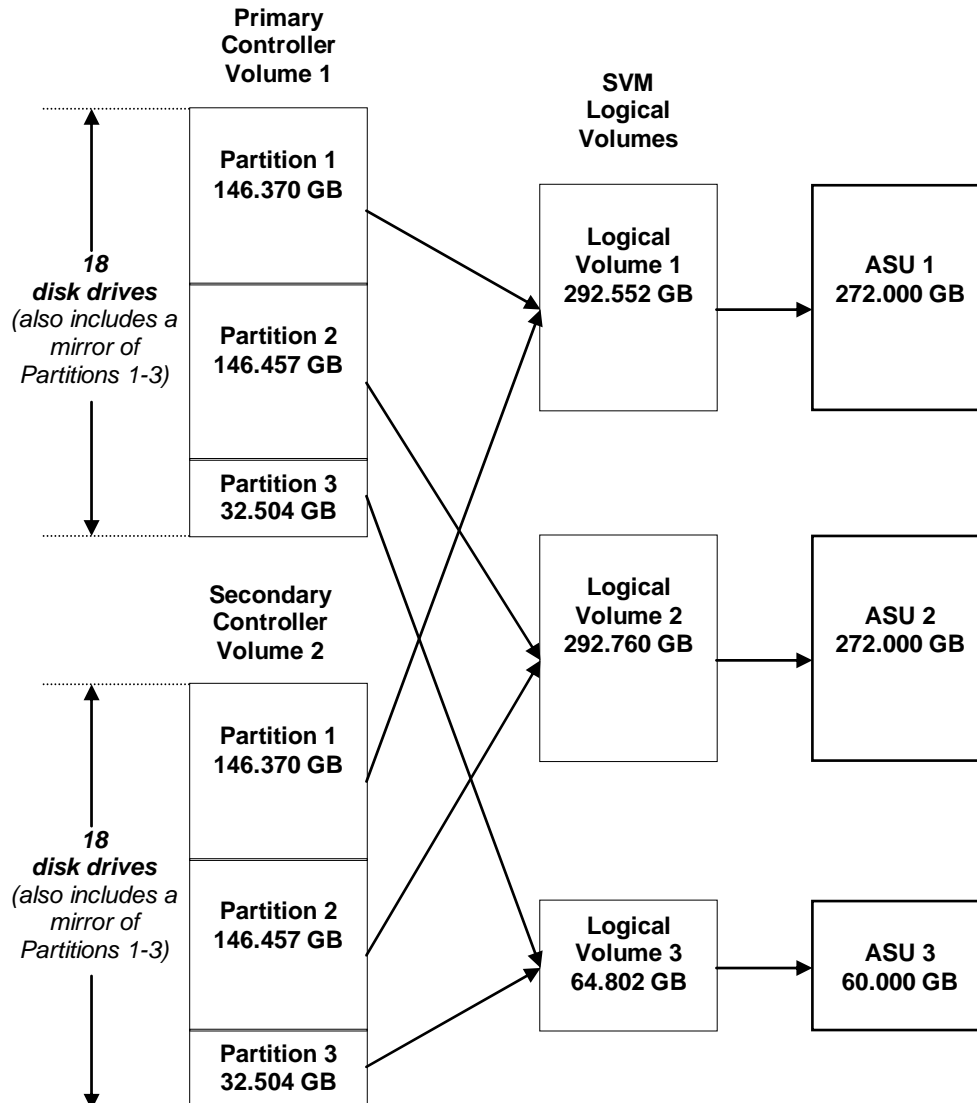
Each volume was created with the following options: 128k Stripe, RAID 0.

The Logical Volume to SPC-1 Application Storage Unit (ASU) mapping was as follows:

- ASU 1: Logical Volume 1
- ASU 2: Logical Volume 2
- ASU 3: Logical Volume 3

The physical disk drive, volume, partition, Logical Volume, and ASU relationships are illustrated below.

### Disk Drives, Volumes, Partitions, Logical Volumes and ASUs



## **APPENDIX C: SPC-1 WORKLOAD GENERATOR STORAGE COMMANDS AND PARAMETERS**

The contents of the SPC-1 Workload Generator command and parameter file is listed below.

```
sd=default  
sd=asu1_1,lun=/dev/md/rdisk/d1,size=272g  
sd=asu2_1,lun=/dev/md/rdisk/d2,size=272g  
sd=asu3_1,lun=/dev/md/rdisk/d3,size=60g  
#sd=asu1_1,lun=/dev/md/rdisk/d1,size=136g  
#sd=asu2_1,lun=/dev/md/rdisk/d2,size=136g  
#sd=asu3_1,lun=/dev/md/rdisk/d3,size=30g
```

## **APPENDIX D: SPC-1 WORKLOAD GENERATOR INPUT PARAMETERS**

```
#!/usr/bin/ksh
bsu=233
STEP=1
startup=180
while [[ $bsu -le 234 ]]
do
outdir=3510/post-audit-rerun/${bsu}
mkdir -p $outdir
metastat > $outdir/metastat
cp run3510 $outdir
cp SPC1.cfg $outdir
cp /etc/lvm/md.tab $outdir
cp /etc/system $outdir
#iostat -xznT d 60 60 > /tmp/prince_iostat.out &
java -Xmx512m persist2
mv persistence1 $outdir
mv persistence2 $outdir
java -Xmx2048m -Xss2048k metrics -b $bsu -s $startup
sleep 10
java -Xmx2048m -Xss1024k repeat1 -b $bsu -s $startup
sleep 10
java -Xmx2048m -Xss1024k repeat2 -b $bsu -s $startup
sleep 10
mv metrics $outdir
mv repeatability1 $outdir
mv repeatability2 $outdir
mv SPCOut $outdir
#cp /tmp/4800a_iostat.out $outdir
zip -r 3510/audit/SE3510_Archive_${bsu}-21 $outdir
bsu=`expr $bsu + $STEP`
echo "All done .... sleeping for 5 minutes"
sleep 30
done
```